

## Research Article

# Agricultural Expansion-Induced Infiltration Rate Change in a West African Tropical Catchment

Yacouba Yira <sup>1,2</sup> and Aymar Y. Bossa<sup>2,3</sup>

<sup>1</sup>Applied Science and Technology Research Institute-IRSAT/CNRST, P.O. Box 7047, Ouagadougou, Burkina Faso

<sup>2</sup>West African Science Service Center on Climate Change and Adapted Land Use-WASCAL, P.O. Box 9507, Ouagadougou 06, Burkina Faso

<sup>3</sup>Department of Hydrology and Water Resources Management, National Institute of Water, University of Abomey-Calavi, P.O. Box 526, Cotonou 01, Benin

Correspondence should be addressed to Yacouba Yira; [yira\\_y@uni-bonn.de](mailto:yira_y@uni-bonn.de)

Received 4 October 2018; Revised 12 December 2018; Accepted 9 January 2019; Published 3 February 2019

Academic Editor: Amaresh K. Nayak

Copyright © 2019 Yacouba Yira and Aymar Y. Bossa. This is an open access article distributed under the Creative Commons Attribution License, which permits unrestricted use, distribution, and reproduction in any medium, provided the original work is properly cited.

Land use and land cover in the Dano catchment is characterized by a rapid conversion from seminatural vegetation (fallow) to agriculture (cropland). The study compares both the saturated ( $K_s$ ) and the unsaturated ( $K_h$ ) hydraulic conductivities under cropland and fallow in the catchment to gain insights into the effect of the current land use on soil water dynamics. Hydraulic conductivity was measured under forty-two (42) pairs of adjacent cropland-fallow plots using a Hood infiltrometer.  $K_s$ ,  $K_h$ , bulk density, and soil texture were further compared using a paired two-tailed Student's  $t$ -test ( $p = 0.05$ ). The results showed that both  $K_s$  and  $K_h$  are highly variable irrespective of the land use type (coefficient of variation > 100%). The results also showed that  $K_s$  was significantly higher (1.16-fold on average) under fallow compared to cropland. As for  $K_h$ , the results showed that, from  $-2$  cm to zero tension heads ( $h$ ),  $K_h$  under cropland and fallow is not significantly different; however, as the supplied tension decreases up to the saturation state,  $K_h$  under fallow becomes statistically higher compared to cropland. No significant difference was found between soil textures and bulk density under cropland and fallow meaning that the observed differences of  $K_s$  and  $K_h$  under cropland and fallow were caused by land use and not preexisting difference in texture. These results suggest an increasing risk of erosion, soil fertility reduction, and flood in the catchment because of agricultural land expansion.

## 1. Introduction

Hydraulic conductivity ( $K$ ) is a key hydraulic property determining water flow in the soil. It is an essential input for hydrological process analysis and simulation, as well as for crop models.  $K$  is potentially influenced by several factors including the topography, soil type and parent material, vegetation, land use, and seasonal change [1–6]. The combination of these factors makes  $K$  a highly variable soil physical property, and measured values may considerably vary for a particular soil [7]. A comprehensive understanding of  $K$  variability and the contribution of influencing factors thus remain a challenge. However, this understanding is a prerequisite to comprehend any hydrological system behavior, improve infiltration process

representation in different applications, and to develop management strategies within agricultural and hydrological systems.

Many studies have increased the understanding of  $K$  variation due to (i) soil texture (e.g., [6, 8–11]), (ii) land use and land cover change [1, 3, 12], (iii) soil type [13, 14], (iv) agricultural practices [15, 16], etc. However, insights gained from the effect of agricultural practices (tillage, crop pattern, and fallow duration) on  $K$  variation have proved to be context specific. This is consistent with a literature review by Strudley et al. [17] which concluded that the results of the reviewed studies are so contradictory that hardly a general rule can be drawn when comparing the effects of agricultural practices on soil hydraulic properties. Indeed, agricultural management induced-infiltration change may be overshadowed

by its high natural spatial and temporal variability of  $K$  [15, 17]. Therefore, many authors (e.g., [17]) suggest that research to determine the impact of agricultural management options on the hydraulic conductivity should consequently be designed in a manner to consider the effect of dominant factors affecting soil hydraulic properties such as the soil type, soil local heterogeneity, and topography.

To exclusively quantify the differences in the soil hydraulic conductivity caused by forest conversion to spontaneous grass, Pirastru et al. [4] followed an approach based on the comparison of adjacent forest-grass fields. In this way, they minimized the potentially confounding factors in order to interpret differences in soil hydraulic conductivity as a function of land use alone. To rule out other influencing factors and assess the influence of land use change on soil hydraulic properties, Zimmermann et al. [18] compared native forest, pasture, and trees plantation located on homogenous soil units. Adjacent plots comparison approach was also followed by Pirastru et al. [19] to investigate on soil hydraulic properties and subsurface hydrological dynamics under maquis and grass, as did Agnese et al. [20] to compare native forest and pasture. Although findings achieved by these authors and many others (e.g., [21, 22]) might differ, they underline the importance of considering homogenous soil units to overcome the influence of dominant factors (e.g., soil type and topography) affecting  $K$  while assessing the impact of land use and land cover change on soil infiltration.

Furthermore, various procedures—field and laboratory—are used to determine the hydraulic conductivity, and each involve a wide range of instruments and solutions. Many studies [23–25] highlighted the dependency of the  $K$  value on the determination method. The laboratory methods are conducted in a more controlled environment and are generally considered very reliable though sample taking, and transportation might introduce an error factor. Field methods of  $K$  measurements may also be subject to some bias. Fodor et al. [26] reported that field measurement of  $K$  may lead to air bubbles entrapped in the soil due to the advancing wetting front and results in a field hydraulic conductivity that may be underestimated. Alagna et al. [27] compared six infiltration techniques and concluded that they provided similar estimates of  $K$  even if the methods were not perfectly equivalent due to different soil disturbances. Overall, field measurement methods of  $K$  are considered to be more representative of soil water conditions [5, 7, 28]. Therefore, the current study adopted a field measurement method.

The abovementioned studies consistently show that land use change potentially alters soil hydraulic conductivity. Furthermore, they underline that changes of soil hydraulic conductivity associated with the conversion from natural vegetation to agriculture depend on the local context (crop types, management practices, etc.). Very few field investigations concerning hydrological processes were made in the tropical African subhumid zones. A very limited number of studies have performed comparative investigations on  $K$  values between different land use types. Croplands have progressively replaced natural vegetation and fallow areas in

the Dano catchment during the past decades [29]. The influence of such a land use dynamics on soil hydraulic conductivity has not yet been investigated. It is hypothesized that cropping and fallowing/natural vegetation differently influence soil hydraulic conductivity and that a decrease of natural vegetation and fallow for the benefit of cropland might modify soil water dynamics and consequently change the hydrological behavior of the catchment. The objective of this study is to determine—at the plot level—the saturated and unsaturated hydraulic conductivities under cropland and fallow/natural vegetation and gain insights into regarding the land use and land cover change impact on soil water dynamics in the Dano catchment.

## 2. Materials and Methods

**2.1. Study Area and Sampling Design.** The investigations were carried out in the Dano catchment (Figure 1). The Dano catchment is in the Southwest Region of Burkina Faso and covers an area of approximately 195 km<sup>2</sup>. The catchment is located in the Sudanese climate zone; thus, it is characterized by (i) the alternation of two seasons including a dry season of 6 to 7 months (November to April) and a rainy season of 5 months (May to October) and (ii) woody, arboraceous, or scrubby savannah vegetation type. Average annual temperatures in the catchment area are around 27°C for average monthly temperatures between 24°C and 32°C with an average annual rainfall over the last 10 years of 958 mm [29]. The main soil groups in the catchments include Gleysols, Cambisols, Lixisols, Stagnosols, Leptosols, and Plinthosols (the latter represents about 73.1% of the area) [31].

The infiltration tests were performed on adjacent plots: one in a cropland and its other counterpart in a fallow area following transect lines. The transect lines were defined in collaboration with the *Soil Science and Soil Ecology* working group of the university of Bonn. This group produced the local soil map of the Dano catchment. In their approach, they defined lines to ensure an even coverage of the study area. The infiltration plots were performed on those transect lines (Figure 1). To account for local soil heterogeneity, for a given pair of cropland-fallow adjacent plots, the distance between plots was kept as close as possible (0 to 3 m), and three infiltration tests were carried out per plot. The saturated hydraulic conductivity  $K_s$  and the unsaturated hydraulic conductivity  $K_h$  values for each plot are calculated as the geometric mean of three replicated infiltration tests. The procedure of adjacent plot selection was repeated forty-two times throughout the catchment, which yielded a set of 42 plots in croplands and related 42 (counterparts) in fallow areas. The infiltration test thus compares a paired sample of the two land use types. The test was carried out in the period of August to October 2012, corresponding to the crop development and midseason stages, i.e., 6 to 8 weeks after ploughing during the rainy season.

**2.2. Measuring Methods.** A Hood infiltrometer [32, 33] was used for the purposes of this study (Figure 2). The Hood

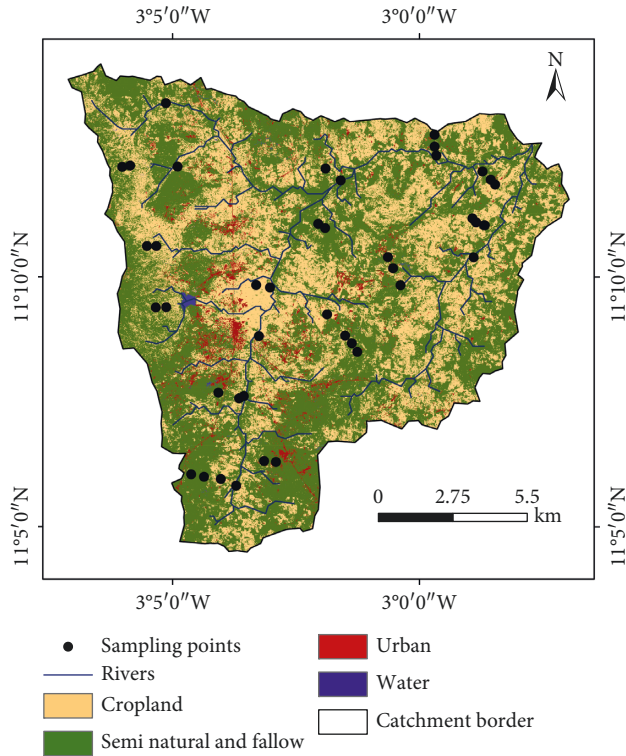


FIGURE 1: Location of sampling points within the Dano catchment. Each sampling point refers to two adjacent cropland and fallow plots. Land use map is after Forkour [30].

infiltrator is a tension infiltrator for measuring both soil surface field  $K_s$  and  $K_h$ . Among the advantages of the method are the *in-situ* measurement of soil hydraulic conductivity, the minimizing of soil disturbance, and the possibility to observe the air entry points during the measurement. Infiltration with the Hood infiltrator starts from a closed hood about three-quarters filled with water and standing on the ground. The control of the hydraulic pressure head in the water volume under the hood is made by adjusting the intake pipe immersion depth in the bubble tower. The difference of height at the U-tube manometer and the water level in the standpipe indicates the applied pressure head under the hood. The applied hood had a radius of 16 cm. Under both fallow and cropland, the vegetation was shortened when necessary to allow a proper installation of the hood. Saturated fine sand was consistently used to seal the edge of the hood against the soil up to an outer ring. During measurement, the hydraulic head is progressively decreased starting from the value zero up to the air entry point. The infiltration rates were recorded for a pressure head of  $h \approx 0$ , followed by constant stairs of 0.5 cm in the pressure head imposition (i.e., -0.5, -1.5, and -2 cm). At  $h < -3$  cm, the number of measurements reduced, and measurements were measured only where possible. The leakage rate ( $\Delta Z/\text{unit time}$ ) was measured on the infiltration reservoir. The flow rate was reported (for  $\Delta Z$  on the infiltration reservoir = 1 cm) when an apparent steady state was reached.

Several procedures are available for calculating the hydraulic conductivity from the measured raw data [26]. However, hydraulic conductivity from the steady-state infiltration in this study was estimated according to Wooding [35] as reported in the instructions manual coming along with the Hood infiltrator [34]. The theoretical principle underlying the Hood infiltrator is summarized in equations (1–5).

Hydraulic conductivity  $K_h$  is a function of water pressure head  $h$  in the soils [36]:

$$K(h) = K_s \exp(\alpha^* h), \quad (1)$$

where  $K_s$  ( $L \cdot T^{-1}$ ) is the saturated hydraulic conductivity,  $h$  ( $L^{-1}$ ) is the water head, and  $\alpha$  is an empirical fitting parameter.

Under steady state and based on equation (1), Wooding [35] found the following approximate solution for the infiltration rate from a shallow circular pond of radius  $r$ :

$$Q(h) = \pi r^2 K_s \exp(\alpha h_0) \left(1 + \frac{4}{\pi r \alpha}\right), \quad (2)$$

where  $Q(h)$  is the steady flow rate ( $L^3 \cdot T^{-1}$ ) under a given supply potential  $h_0$  (L).

$K_s$  and  $\alpha$  are the only unknowns from equation (2). They can be either solved by making measurements at a fixed water tension with multiple disc radii or inversely making measurements with a fixed disk radius at multiple water tensions. The latter was applied in this study.

The application of equation (2), for neighboring values of water tensions ( $h_1, h_2$ ), gives (note that in this study the difference of the pressure head between  $h_1$  and  $h_2 = 0.5$  cm)

$$\frac{Q_1}{\pi r^2} = K_s \exp(\alpha h_1) \left(1 + \frac{4}{\pi r \alpha}\right), \quad (3)$$

$$\frac{Q_2}{\pi r^2} = K_s \exp(\alpha h_2) \left(1 + \frac{4}{\pi r \alpha}\right).$$

And by the means of division,  $\alpha$  can be derived as follows:

$$\alpha = \frac{\ln(Q_1/Q_2)}{h_1 - h_2}. \quad (4)$$

Finally, the hydraulic conductivity for  $h_1$  is given by

$$K(h_1) = \frac{(Q_1/\pi r^2)}{1 + (4/\pi r \alpha)}. \quad (5)$$

**2.3. Soil Physical and Chemical Properties.** Alongside the infiltration measurement test, undisturbed topsoil (1–10 cm) core samples and disturbed topsoil samples were collected for laboratory analyses. The undisturbed soil samples were taken using stainless steel sample rings following the drop hammer method on leveled soil horizons. The core cylinders were 250 cm<sup>3</sup> volume, i.e., 4 cm and 5 cm in radius and height, respectively. The samples were collected on 50% of the infiltration test plots, i.e., 21 disturbed



TABLE 1: Descriptive statistics of  $\log_{10} K_s$  for cropland and fallow ( $n = 42$ ).

Variable	Land use	Mean (cm/d)	CV (%)	SWilk $p$ value
$\log_{10} K_s$	Cropland	2.32	24.17	0.30
	Fallow	2.60	13.65	0.39

CV: coefficient of variation; SWilk  $p$  value: Shapiro and Wilk skewness significance test  $p$  value;  $n$ : sample size.

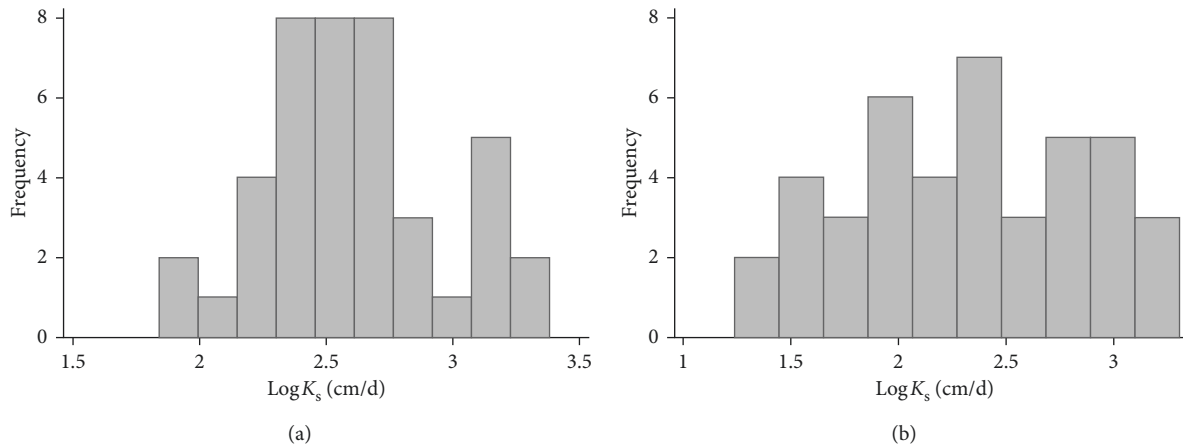


FIGURE 3: Histograms of  $-\log_{10}$  transformed saturated hydraulic conductivity under fallow (a) and cropland (b) ( $n = 42$ ).

crop species under cultivation in the infiltration plots. The investigated croplands were mainly composed of sorghum, cotton, maize, cowpea, and groundnut, each with a specific cropping calendar. The difference in the cropping calendar further implies different crop development stages. Alletto and Coquet [41] highlighted the root development stage as a  $K_s$  temporal variation factor under cropland. On the other hand, variation of  $K_s$  under cropland can be explained by the ploughing of croplands. All investigated fields were tilled. Tillage is known to have a transient effect on  $K_s$ . The saturated hydraulic conductivity generally increases immediately after tillage due to an increase in water-conducting mesopores and macropores but decreases afterward due to settlement and consolidation of the soil [16, 43]. Osunbitan et al. [45] noticed that, eight weeks after tillage,  $K_s$  under cropland could decrease to a rate lower than  $K_s$  under land use without tillage. The infiltration tests were performed over a relatively long period (about two months, Section 2.1), implying that different crop development stages were under investigation. Moreover, the crops fields were ploughed at different periods. Differences of the crop type, development phase, and date of plough, as the above authors, may explain the observed high dispersion of  $K_s$  under cropland.

Figure 4 suggests that saturated hydraulic conductivity is generally higher under fallow compared to cropland. The paired two-tailed Student's  $t$ -test shows that there is a difference between  $\log K_s$  under cropland and  $\log K_s$  under fallow ( $p$  value = 0.007). These results are in line with the conclusion of several studies [18, 46] dealing with land use and land cover change impact on the saturated hydraulic conductivity that is a decreasing hydraulic conductivity with increasing land use intensity (i.e., a conversion from natural vegetation to crop). However, the distribution of the

considered sample between different crops, especially crop association (Table 2), limits investigating the sole effect of crop types on  $K_s$ . Furthermore, as 90% of the sampled points were located on Plinthosols (the dominant soil group), one could not perform a consistent investigation on the effect that soil type had on the difference between  $K_s$  under cropland and fallow. Nevertheless, the results overall evidence that  $K_s$  is significantly higher under fallow compared to cropland, suggesting a difference in the soil macroporosity under the two land use types.

Macropores have a larger influence on the hydraulic conductivity at saturation than mesopores even though they generally occupy a much smaller fraction of total soil porosity [16, 47, 48]. Iovino et al. [49] found contribution of micropores to unsaturated flow to be relatively more important in tilled soil than in natural ones. Conversely, close to saturation, flow in the natural, nontilled soils concentrates in a relatively small number of large macropores. Macropores under fallow and natural vegetation are primarily formed by (i) biological activity of earthworms, ants, and termites [3], and (ii) plant roots [48, 50]. Under ploughed cropland, macropores are formed by (i) the rearrangement of the solid phase by a tillage tool, (ii) plant roots, and (iii) to a lesser extent by earthworms [51–54]. Benjamin [50] reported macroporosity to be reduced under cropland as compared to fallow and other natural vegetation types due to earthworm and termite populations abundance under the latter compared to cropland. Tillage is furthermore a punctual operation with a transient effect on porosity increment; however, tillage-induced disturbance is reported to have a detrimental impact on preexisting macropores and earthworm and termite population abundance [51–54]. Against this trend of increasing infiltration rate with

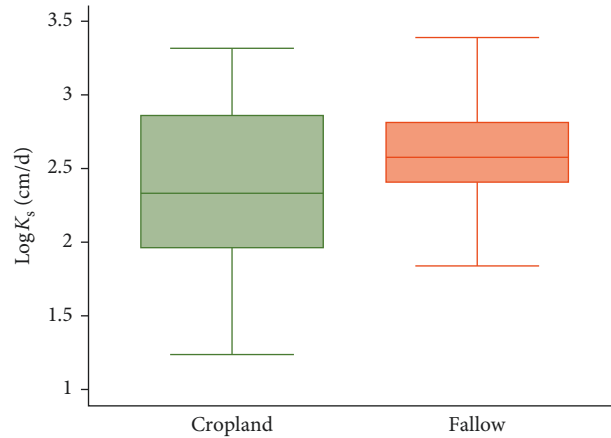


FIGURE 4: Boxplot comparison of saturated hydraulic conductivity ( $\log K_s$ ) on cropland and fallow.

TABLE 2: Descriptive statistics of the  $K_s$  (cm/d) per crop type ( $n = 42$ ).

Crop type	$n$	Mean	SD	Minimum	Maximum
Cotton	3	54.64	57.46	17.27	120.8
Cowpea	4	158.87	159.5	50	395.97
Groundnut	4	49.23	29.15	28.76	92.46
Maize	4	362.81	270.1	175.71	760.16
Sorghum	27	583.93	563.09	33.05	2048

Cowpea and groundnut are additionally associated with sorghum and maize in intercropping.

increasing biological activity, Jouquet et al. [55] reported that termite sheetings breakdown generate structural crusts which reduce the infiltration rate under fallow. Mettrop et al. [56] also report a reduction of the infiltration rate due to termite activity in northern Burkina Faso.

Field observations during the infiltration test attested a root density much higher under fallow compared to cropland. The decomposition of roots and subsequent formation of root channels may contribute to the higher macroporosity under fallow. No comparative investigation on the earthworm, termite, ant, etc. population density was carried out; however, the systematic annual ploughing of croplands suggests that the fauna activity might be lower under cropland compared to fallow areas.

**3.2. Unsaturated Hydraulic Conductivity.** Unsaturated hydraulic conductivity was derived from the infiltration rate measurements. At supplied tension heads ( $h$ ) below  $-2$  cm, unsaturated hydraulic conductivity under cropland and fallow was found to be not statistically different ( $p$  value = 0.05). As the supplied tension decreases up to the saturation state, the hydraulic conductivity under fallow becomes significantly higher compared to cropland (Table 3). This ascertains that differences of hydraulic conductivity between fallow and cropland become greater towards saturation as reported by Kelishadi et al. [57] (Figure 5). The result supports the idea that the difference in the hydraulic conductivity between fallow and cropland is indeed associated with the difference of macroporosity as suggested in Section 3.1. Under high water tension ( $h$ ),

whilst water predominantly flows through the soil matrix no difference between land use types is noted. This ascertains that matrix conductivity is quite similar under the different land use types. However, toward saturation, when water starts flowing into soil macropores, significant differences are observed between the land use types, implying a predominant function of soil macropores.

**3.3. Soil Properties and the Hydraulic Conductivity.** The  $t$ -test shows no significant difference between the textures of different land use types and denotes that the observed difference of hydrological conductivity was caused by land use and not preexisting difference in texture (Table 4). The comparison of bulk density and soil carbon content under the two land uses shows a similar trend. These results suggest that the difference of  $K_s$  between cropland and fallow is unlikely to be attributable to the initial arrangement and size in soil pore. Several decades of cultivation the Dano catchment combined with the shortening of fallowing periods do not allow a consequent organic matter accumulation in the topsoil even under fallowing. The rapid rotation between cropland and fallow tends to even the soil texture and organic matter content in the catchment.

## 4. Conclusion

Through the comparison of saturated and unsaturated hydraulic conductivity, the study exhibited that, for the same land use type (cropland or fallow), the infiltration rate is a highly variable parameter in the Dano catchment. However,

TABLE 3: Summary of statistics for the  $\log_{10}$  of unsaturated hydraulic conductivity with increasing water tension ( $n = 42$ ).

Water tension (cm)	$\log_{10} K_h$ under cropland			$\log_{10} K_h$ under fallow			Cropland vs <i>fallow</i> <i>t</i> -test <i>p</i> value
	Mean	95% CI		Mean	95% CI		
-0.1	2.29	2.11	2.46	2.57	2.46	2.68	0.0078
-0.5	2.16	1.98	2.34	2.43	2.32	2.54	0.0096
-1	2.00	1.81	2.18	2.26	2.14	2.37	0.0186
-1.5	1.83	1.63	2.04	2.09	1.95	2.22	0.0417
-2	1.67	1.44	1.90	1.91	1.75	2.07	<b>0.0853</b>
-2.5	1.51	1.25	1.77	1.74	1.55	1.93	0.1482
-3	1.34	1.05	1.64	1.57	1.34	1.79	0.2229
-5	0.69	0.26	1.13	0.88	0.51	1.25	0.511
-10	-0.93	-1.76	-0.10	-0.84	-1.58	-0.09	0.8674

CI: confidence interval;  $n$ : sample size.

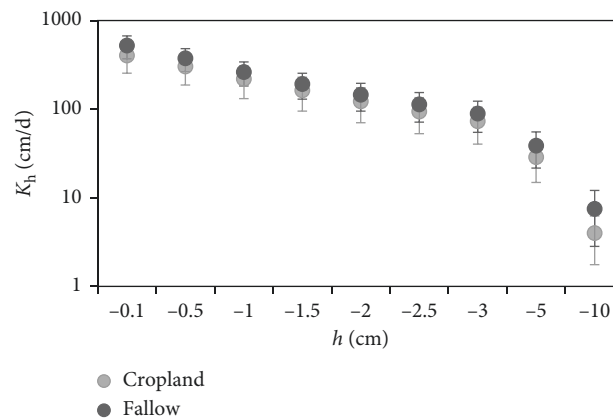


FIGURE 5: Mean and 95% confidence interval of unsaturated hydraulic conductivity ( $K_h$ ) estimated from field measurement with increasing water tension under cropland and fallow.

TABLE 4: Soil texture, coarse particles, and bulk density under cropland and fallow at the investigated plots.

Variable	Cropland					Fallow					Cropland vs Fallow <i>t</i> -test <i>p</i> value
	Mean	SD	Minimum	Maximum	<i>n</i>	Mean	SD	Minimum	Maximum	<i>n</i>	
Sand (%)	37.75	8.83	21.05	53.47	21	35.59	10.38	14.69	51.26	21	0.4709
Clay (%)	20.58	9.31	4.69	37.34	21	22.08	7.12	13.77	34.86	21	0.5622
Bulk density (g/cm <sup>3</sup> )	1.43	0.12	1.24	1.75	21	1.42	0.14	1.14	1.60	21	0.9042
Coarse particles (%)	43.21	27.73	0.88	84.96	21	53.21	29.38	0.00	89.70	21	0.2636
SOC (%)	1.39	0.63	0.33	3.39	21	1.47	0.64	0.18	2.75	21	0.6795

Sample distribution per soil type: Plinthosol = 71%; Cambisol = 9%; Lixisol = 9%; Stagnosol = 9%.

the adjacent plots comparison approach as performed in the study reveals significant differences of  $K_s$  and  $K_h$  for water tension lower than  $-2$  cm between cropland and fallow. This difference was attributed to abundant macropores under fallow compared to cropland. Soil macroporosity appears to be reduced under cropland as suggested by the measurements of the unsaturated hydraulic conduction at a different water tension. Therefore, ploughing and other farming activities are likely to negatively affect soil pore size and arrangement.

The results further indicate that a decrease in soil infiltration following a conversion from fallow to cropland is not influenced by texture and depend only on the soil structure that, to some extent, is dependent on land use. As

shown in the study, both cropland and fallow areas had very comparable textural composition, bulk density, and organic matter content. Overall, land conversion from fallow to cropland in the Dano catchment shows—at the plot scale—a potential to increase infiltration excess overland flow and consequently exacerbate surface runoff generation which could lead to more erosion, loss of soil fertility, or flood in the catchment.

### Data Availability

The data set applied in the study is available on request to the corresponding author.

## Conflicts of Interest

The authors declare that there are no conflicts of interest.

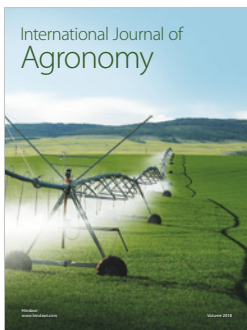
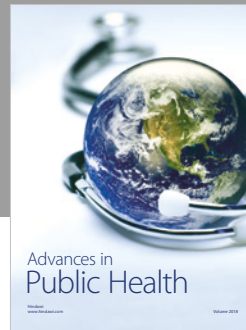
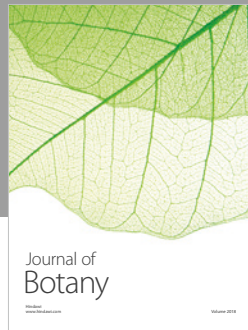
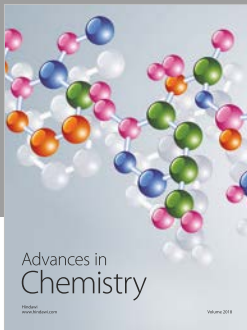
## Acknowledgments

The authors are grateful for the financial support provided by the German Federal Ministry of Education and Research (BMBF) (Grant No. 01LG1202E) through the West African Science Service Centre for Climate Change and Adapted Land Use (WASCAL) project. This manuscript relies on a chapter of a PhD thesis recently completed by the lead author, and thanks are due to the supervisor of the thesis Prof. Dr. Bernd Diekkrüger.

## References

- [1] H. Bormann, T. Faß, S. Giertz et al., "From local hydrological process analysis to regional hydrological model application in Benin: concept, results and perspectives," *Physics and Chemistry of the Earth, Parts A/B/C*, vol. 30, no. 6-7, pp. 347-356, 2005.
- [2] H. Bormann and K. Klaassen, "Seasonal and land use dependent variability of soil hydraulic and soil hydrological properties of two Northern German soils," *Geoderma*, vol. 145, no. 3-4, pp. 295-302, 2008.
- [3] S. Giertz and B. Diekkrüger, "Analysis of the hydrological processes in a small headwater catchment in Benin (West Africa)," *Physics and Chemistry of the Earth, Parts A/B/C*, vol. 28, no. 33-36, pp. 1333-1341, 2003.
- [4] M. Pirastru, M. Castellini, F. Giadrossich, and M. Niedda, "Comparing the hydraulic properties of forested and grassed soils on an experimental hillslope in a mediterranean environment," *Procedia Environmental Sciences*, vol. 19, pp. 341-350, 2013.
- [5] M. Rienzner and C. Gandolfi, "Investigation of spatial and temporal variability of saturated soil hydraulic conductivity at the field-scale," *Soil and Tillage Research*, vol. 135, pp. 28-40, 2014.
- [6] Y. Wang, M. a. Shao, Z. Liu, and R. Horton, "Regional-scale variation and distribution patterns of soil saturated hydraulic conductivities in surface and subsurface layers in the loessial soils of China," *Journal of Hydrology*, vol. 487, pp. 13-23, 2013.
- [7] SCS, "Soil survey manual," in *U.S. Department of Agriculture Handbook 18*, USDA, Washington, DC, USA, 1993.
- [8] W. J. Rawls and D. L. Brakensiek, "Estimation of soil water retention and hydraulic properties," in *Unsaturated Flow in Hydrologic Modeling, NATO ASI Series*, H. J. Morel-Seytoux, Ed., Springer, Dordrecht, Netherlands, pp. 275-300, 1989.
- [9] D. Schulze-Makuch, D. A. Carlson, D. S. Cherkauer, and P. Malik, "Scale dependency of hydraulic conductivity in heterogeneous media," *Ground Water*, vol. 37, no. 6, pp. 904-919, 1999.
- [10] O. Tietje and V. Hennings, "Accuracy of the saturated hydraulic conductivity prediction by pedo-transfer functions compared to the variability within FAO textural classes," *Geoderma*, vol. 69, no. 1-2, pp. 71-84, 1996.
- [11] H. Vereecken, J. Maes, and J. Feyen, "Estimating unsaturated hydraulic conductivity from easily measured soil properties," *Soil Science*, vol. 149, no. 1, pp. 1-12, 1990.
- [12] I. A. Shabtai, M. Shenker, W. L. Edeto, A. Warburg, and M. Ben-Hur, "Effects of land use on structure and hydraulic properties of Vertisols containing a sodic horizon in northern Ethiopia," *Soil and Tillage Research*, vol. 136, pp. 19-27, 2014.
- [13] V. Novák, K. Kňava, and J. Šimůnek, "Determining the influence of stones on hydraulic conductivity of saturated soils using numerical method," *Geoderma*, vol. 161, no. 3-4, pp. 177-181, 2011.
- [14] C. Zeng, Q. Wang, F. Zhang, and J. Zhang, "Temporal changes in soil hydraulic conductivity with different soil types and irrigation methods," *Geoderma*, vol. 193-194, pp. 290-299, 2013.
- [15] T. R. Green, L. R. Ahuja, and J. G. Benjamin, "Advances and challenges in predicting agricultural management effects on soil hydraulic properties," *Geoderma*, vol. 116, no. 1-2, pp. 3-27, 2003.
- [16] D. Moret and J. L. Arrúe, "Dynamics of soil hydraulic properties during fallow as affected by tillage," *Soil and Tillage Research*, vol. 96, no. 1-2, pp. 103-113, 2007.
- [17] M. Strudley, T. Green, and J. Ascoughii II, "Tillage effects on soil hydraulic properties in space and time: state of the science," *Soil and Tillage Research*, vol. 99, no. 1, pp. 4-48, 2008.
- [18] B. Zimmermann, H. Elsenbeer, and J. M. De Moraes, "The influence of land-use changes on soil hydraulic properties: implications for runoff generation," *Forest Ecology and Management*, vol. 222, no. 1-3, pp. 29-38, 2006.
- [19] M. Pirastru, M. Niedda, and M. Castellini, "Effects of maquis clearing on the properties of the soil and on the near-surface hydrological processes in a semi-arid Mediterranean environment," *Journal of Agricultural Engineering*, vol. 45, no. 4, pp. 176-187, 2014.
- [20] C. Agnese, V. Bagarello, G. Baiamonte, and M. Iovino, "Comparing physical quality of forest and pasture soils in a Sicilian watershed," *Soil Science Society of America Journal*, vol. 75, no. 5, p. 1958, 2011.
- [21] R. Scheffler, C. Neill, A. V. Krusche, and H. Elsenbeer, "Soil hydraulic response to land-use change associated with the recent soybean expansion at the Amazon agricultural frontier," *Agriculture, Ecosystems & Environment*, vol. 144, no. 1, pp. 281-289, 2011.
- [22] R. C. Schwartz, S. R. Evett, and P. W. Unger, "Soil hydraulic properties of cropland compared with reestablished and native grassland," *Geoderma*, vol. 116, no. 1-2, pp. 47-60, 2003.
- [23] B. P. Mohanty, R. S. Kanwar, and C. J. Everts, "Comparison of saturated hydraulic conductivity measurement methods for a glacial-till soil," *Soil Science*, vol. 58, no. 3, p. 672, 1994.
- [24] W. D. Reynolds, B. T. Bowman, R. R. Brunke, C. F. Drury, and C. S. Tan, "Comparison of tension infiltrometer, pressure infiltrometer, and soil core estimates of saturated hydraulic conductivity," *Soil Science Society of America Journal*, vol. 64, no. 2, p. 478, 2000.
- [25] D. Wang, S. R. Yates, B. Lowery, and M. van Genuchten, "Estimating soil hydraulic properties using tension infiltrometer with varying disk diameter," *Soil Science*, vol. 163, no. 5, pp. 356-361, 1998.
- [26] N. Fodor, R. Sándor, T. Orfanus, L. Lichner, and K. Rajkai, "Evaluation method dependency of measured saturated hydraulic conductivity," *Geoderma*, vol. 165, no. 1, pp. 60-68, 2011.
- [27] V. Alagna, V. Bagarello, S. Di Prima, and M. Iovino, "Determining hydraulic properties of a loam soil by alternative infiltrometer techniques," *Hydrological Processes*, vol. 30, no. 2, pp. 263-275, 2015.
- [28] T. B. Ramos, M. C. Gonçalves, J. C. Martins, M. T. van Genuchten, and F. P. Pires, "Estimation of soil

- hydraulic properties from numerical inversion of tension disk infiltrometer data," *Vadose Zone Journal*, vol. 5, no. 2, p. 684, 2006.
- [29] Y. Yira, B. Diekkrüger, G. Steup, and A. Y. Bossa, "Modeling land use change impacts on water resources in a tropical West African catchment (Dano, Burkina Faso)," *Journal of Hydrology*, vol. 537, pp. 187–199, 2016.
- [30] G. Forkour, *Agricultural land use mapping in west africa using multi-sensor satellite imagery*, Ph.D. thesis, Julius-Maximilians-Universität, Würzburg, Germany, 2014, [http://opus.uni-wuerzburg.de/files/10868/thesis\\_gerald\\_forkuor\\_2014.pdf](http://opus.uni-wuerzburg.de/files/10868/thesis_gerald_forkuor_2014.pdf).
- [31] O. K. L. Hounkpatin, F. Op de Hipt, A. Y. Bossa, G. Welp, and W. Amelung, "Soil organic carbon stocks and their determining factors in the Dano catchment (Southwest Burkina Faso)," *CATENA*, vol. 166, pp. 298–309, 2018.
- [32] K. Schwärzel and J. Punzel, "Hood infiltrometer-A new type of tension infiltrometer," *Soil Science Society of America Journal*, vol. 71, no. 5, p. 1438, 2007.
- [33] I. Vogeler, J. Rogasik, U. Funder, K. Panten, and E. Schnug, "Effect of tillage systems and P-fertilization on soil physical and chemical properties, crop yield and nutrient uptake," *Soil and Tillage Research*, vol. 103, no. 1, pp. 137–143, 2009.
- [34] UGT, *Hood Infiltrrometer IL-2700*, UGT, Mataró, Spain, 2012, [http://www.ugt-online.de/fileadmin/media/products/01%20bodenkunde/downloads/Hauben\\_etc/Hood-Infiltrrometer\\_-\\_IL\\_2700.pdf](http://www.ugt-online.de/fileadmin/media/products/01%20bodenkunde/downloads/Hauben_etc/Hood-Infiltrrometer_-_IL_2700.pdf).
- [35] R. A. Wooding, "Steady infiltration from a shallow circular pond," *Water Resources Research*, vol. 4, no. 6, pp. 1259–1273, 2010.
- [36] W. R. Gardner, "Some steady-state solutions of the unsaturated moisture flow equation with application to evaporation from a water table," *Soil Science*, vol. 85, no. 4, pp. 228–232, 1958.
- [37] ISO 11277, *Soil Quality-Determination of Particle Size Distribution in Mineral Soil Material-Method by Sieving and Sedimentation*, ISO, Geneva, Switzerland, 2002.
- [38] ISO 10694, *Soil Quality-Determination of Organic and Total Carbon after Dry Combustion (Elementary Analysis)*, ISO, Geneva, Switzerland, 1995.
- [39] ISO 13878, *Soil Quality-Determination of Total Nitrogen Content by Dry Combustion ("Elemental Analysis")*, ISO, Geneva, Switzerland, 1998.
- [40] D. R. Helsel, H. Helsel, and R. Dennis, *Statistical Methods in Water Resources*, Elsevier Science Pub. Co., Amsterdam, Netherlands, 1993.
- [41] L. Alletto and Y. Coquet, "Temporal and spatial variability of soil bulk density and near-saturated hydraulic conductivity under two contrasted tillage management systems," *Geoderma*, vol. 152, no. 1-2, pp. 85–94, 2009.
- [42] B. Diekkrüger, "Upscaling of hydrological models by means of parameter aggregation technique," in *Dynamics of Multiscale Earth Systems, Lecture Notes in Earth Sciences*, P. H. J. Neugebauer and C. Simmer, Eds., pp. 145–165, Springer, Berlin, Germany, 2003.
- [43] A. Schwen, G. Bodner, P. Scholl, G. D. Buchan, and W. Loiskandl, "Temporal dynamics of soil hydraulic properties and the water-conducting porosity under different tillage," *Soil and Tillage Research*, vol. 113, no. 2, pp. 89–98, 2011.
- [44] J. P. Miranda, L. M. Silva, R. L. Lima et al., "Fallow effects on improving soil properties and decreasing erosion: atlantic forest, southeastern Brazil," in *Proceedings of EGU General Assembly Conference Abstracts*, p. 12276, Vienna, Austria, April 2009.
- [45] J. A. Osunbitan, D. J. Oyedele, and K. O. Adekalu, "Tillage effects on bulk density, hydraulic conductivity and strength of a loamy sand soil in southwestern Nigeria," *Soil and Tillage Research*, vol. 82, no. 1, pp. 57–64, 2005.
- [46] J. Neris, C. Jiménez, J. Fuentes, G. Morillas, and M. Tejedor, "Vegetation and land-use effects on soil properties and water infiltration of Andisols in Tenerife (Canary Islands, Spain)," *CATENA*, vol. 98, pp. 55–62, 2012.
- [47] J. Holden, "Flow through macropores of different size classes in blanket peat," *Journal of Hydrology*, vol. 364, no. 3-4, pp. 342–348, 2009.
- [48] M. Cameira, R. M. Fernando, and L. S. Pereira, "Soil macropore dynamics affected by tillage and irrigation for a silty loam alluvial soil in southern Portugal," *Soil and Tillage Research*, vol. 70, no. 2, pp. 131–140, 2003.
- [49] M. Iovino, M. Castellini, V. Bagarello, and G. Giordano, "Using static and dynamic indicators to evaluate soil physical quality in a Sicilian area," *Land Degradation and Development*, vol. 27, no. 2, pp. 200–210, 2013.
- [50] J. G. Benjamin, "Tillage effects on near-surface soil hydraulic properties," *Soil and Tillage Research*, vol. 26, no. 4, pp. 277–288, 1993.
- [51] N. S. Eriksen-Hamel, A. B. Speratti, J. K. Whalen, A. Légère, and C. A. Madramootoo, "Earthworm populations and growth rates related to long-term crop residue and tillage management," *Soil and Tillage Research*, vol. 104, no. 2, pp. 311–316, 2009.
- [52] S. Hauser, L. Norgrove, D. Asawalam, and S. Schulz, "Effect of land use change, cropping systems and soil type on earthworm cast production in West and Central Africa," *European Journal of Soil Biology*, vol. 49, pp. 47–54, 2012.
- [53] J. Peigné, M. Cannavaciolo, Y. Gautronneau, A. Aveline, J. L. Giteau, and D. Cluzeau, "Earthworm populations under different tillage systems in organic farming," *Soil and Tillage Research*, vol. 104, no. 2, pp. 207–214, 2009.
- [54] G. Sileshi and P. L. Mafongoya, "Effect of rotational fallows on abundance of soil insects and weeds in maize crops in eastern Zambia," *Applied Soil Ecology*, vol. 23, no. 3, pp. 211–222, 2003.
- [55] P. Jouquet, J.-L. Janeau, A. Pisano et al., "Influence of earthworms and termites on runoff and erosion in a tropical steep slope fallow in Vietnam: a rainfall simulation experiment," *Applied Soil Ecology*, vol. 61, pp. 161–168, 2012.
- [56] I. S. Mettrop, L. H. Cammeraat, and E. Verbeeten, "The impact of subterranean termite activity on water infiltration and topsoil properties in Burkina Faso," *Ecohydrology*, vol. 6, no. 2, pp. 324–331, 2012.
- [57] H. Kelishadi, M. R. Mosaddeghi, M. A. Hajabbasi, and S. Ayoubi, "Near-saturated soil hydraulic properties as influenced by land use management systems in Koohrang region of central Zagros, Iran," *Geoderma*, vol. 213, pp. 426–434, 2014.



**Hindawi**

Submit your manuscripts at  
[www.hindawi.com](http://www.hindawi.com)

