




Login (<http://ms.academicjournals.org>) 

JOURNAL OF
PUBLIC HEALTH AND EPIDEMIOLOGY

Abbreviation: J. Public Health Epidemiol. | Language: English | ISSN: 2141-2316 | DOI: 10.5897/JPHE |
Start Year: 2009 | Published Articles: 596

[JPHE Home \(/journal/JPHE\)](/journal/JPHE) | [About JPHE \(/journal/JPHE/about\)](/journal/JPHE/about) | [Editors \(/journal/JPHE/editors\)](/journal/JPHE/editors) |
[Instructions \(/journal/JPHE/authors\)](/journal/JPHE/authors) | [Articles \(/journal/JPHE/articles\)](/journal/JPHE/articles) |
[Archive \(/journal/JPHE/archive\)](/journal/JPHE/archive) | [Articles In Press \(/JPHE/inpress\)](/JPHE/inpress)

Editors – JPHE

JPHE Policies

[Abstracting and Indexing \(/journal/JPHE/about/abstracting-and-indexing\)](/journal/JPHE/about/abstracting-and-indexing)

[Archiving Policy \(/journal/JPHE/about/archiving-policy\)](/journal/JPHE/about/archiving-policy)

[Article Metrics \(/journal/JPHE/about/article-metrics\)](/journal/JPHE/about/article-metrics)

[Contact Us \(/journal/JPHE/about/contact-us\)](/journal/JPHE/about/contact-us)

[Copyright & Permissions \(/journal/JPHE/about/copyright-permissions\)](/journal/JPHE/about/copyright-permissions)

[Editorial Policies \(/journal/JPHE/about/editorial-policies\)](/journal/JPHE/about/editorial-policies)

[Metadata Harvesting \(/journal/JPHE/about/metadata-harvesting\)](/journal/JPHE/about/metadata-harvesting)

[Open Access Policy \(/journal/JPHE/about/open-access-policy\)](/journal/JPHE/about/open-access-policy)

[Peer Review \(/journal/JPHE/about/peer-review\)](/journal/JPHE/about/peer-review)



[Publication Fees \(/journal/JPHE/about/publication-fees\)](/journal/JPHE/about/publication-fees)

[Login \(http://ms.academicjournals.org\)](http://ms.academicjournals.org)



[Publication Process \(/journal/JPHE/about/publication-process\)](/journal/JPHE/about/publication-process)

[Research & Publication Ethics \(/journal/JPHE/about/research-publication-ethics\)](/journal/JPHE/about/research-publication-ethics)

[Reviewer's Guidelines \(/journal/JPHE/about/reviewers-guidelines\)](/journal/JPHE/about/reviewers-guidelines)

[Submitting Your Manuscript \(/journal/JPHE/about/submitting-your-manuscript\)](/journal/JPHE/about/submitting-your-manuscript)

[Waiver Policy \(/journal/JPHE/about/waiver-policy\)](/journal/JPHE/about/waiver-policy)



**ACADEMIC
JOURNALS** (I)
expand your knowledge

Editor in Chief

Login (<http://ms.academicjournals.org>)



Dr. Mohammad Mohsin Khan

Community Health Sciences
Amna Inayat Medical College and Research Institute
Lahore,
Pakistan.

Editors

Prof. Mostafa A. Abolfotouh

King Abdullah International Medical Research Center
King Saud Bin-Abdulaziz University for Health Sciences
National Guard Health Affairs,
Saudi Arabia.

Dr. Smith Stella Ifeanyi

Nigerian Institute of Med. Research,
Yaba, Lagos State,
Nigeria.

Dr. Areej Hussein

Department of Microbiology
College of Medicine
University of Diyala
Iraq.

Dr. Edlaine Villela

Institute of Health Sciences
Federal University of Goiás (UFG)
Brazil.

Dr. Xiaoliang Qiu

Department of Physiology and Biophysics
Stony Brook University
USA.

Dr. Jakir Hossain Bhuiyan Masud

Public Health,



ACADEMIC
JOURNALS

expand your knowledge

GUI,SHED Foundation, CTS, The Union,

IF (H)MA, GYAT,

Bangladesh.

Login (<http://ms.academicjournals.org>)



Dr. Naveen Patil

Infectious Diseases,

Arkansas Department of Health, Little Rock,

AR, 72205, USA.

SUBSCRIBE TO RSS (/all_articles.rss) >

SUBMIT MANUSCRIPT (<http://ms.academicjournals.org/>) >

CONFERENCES (<http://conferences.academicjournals.org>) >



AUTHORS

Submit Manuscript

Track Manuscript

Publication Ethics

Editorial Policies

Publication Fee

Waiver Policy

Print Request

FAQ

REVIEWERS



Login (<http://ms.academicjournals.org>)

Peer Review

EDITORS

Editors

READERS

Journals

Proceedings

News

Articles

Search Articles

Conference Announcements

Perspectives

Subscribe to RSS

POLICIES

Open Access

Creative Commons

CrossMark Policy

Digital Archiving

Self-Archiving

Article Copyright

ABOUT

About Us

Memberships & Standards

Open Archives Initiatives

Support Center

Subscribe to RSS

Terms of use

Contact

© Academic Journals 2002 - 2022



Login (<http://ms.academicjournals.org>) 

JOURNAL OF
PUBLIC HEALTH AND EPIDEMIOLOGY

Abbreviation: J. Public Health Epidemiol. | Language: English | ISSN: 2141-2316 | DOI: 10.5897/JPHE |
Start Year: 2009 | Published Articles: 596

[JPHE Home \(/journal/JPHE\)](/journal/JPHE) | [About JPHE \(/journal/JPHE/about\)](/journal/JPHE/about) | [Editors \(/journal/JPHE/editors\)](/journal/JPHE/editors) |
[Instructions \(/journal/JPHE/authors\)](/journal/JPHE/authors) | [Articles \(/journal/JPHE/articles\)](/journal/JPHE/articles) |
[Archive \(/journal/JPHE/archive\)](/journal/JPHE/archive) | [Articles In Press \(/JPHE/inpress\)](/JPHE/inpress)

Table of Content: April-June 2021; 13(2)

View: All

Sort by: Date ▾

April 2021

Environmental and behavioural factors associated with Mycobacterium ulcerans infection in the district of Lalo in Benin: A case-control study

The mode of transmission of Buruli ulcer (BU) is not yet well understood. This study aimed to identify risk factors for BU in the district of Lalo in Benin. This is a case-control study taking into account all cases of BU detected from 2013 to 2018 and treated at the Buruli's ulcer Screening and Treatment Center (CDTUB) of Lalo. For each case, two controls were matched according to age and sex. Conditional...

Author(s): Anagonou Gimatal Esai, Sopoh Ghislain Emmanuel, Biauou Chabi Alphonse, Barogui Yves Thierry, Wadagni Anita Carolle, Gnimavo Sètonджи Ronald, Ayelo Gilbert Adjimon, Saka Kora Eric, Houezo Jean Gabin and Johnson Roch Christian,

<https://doi.org/10.5897/JPHE2021.1306> (<https://doi.org/10.5897/JPHE2021.1306>) |

Article Number: 78AAA5766467

[Abstract \(/journal/JPHE/article-abstract/78AAA5766467\)](/journal/JPHE/article-abstract/78AAA5766467)

Prevalence of tobacco use and associated risk factors among pregnant women in Maracha District, Uganda

Globally, tobacco use has become the largest public health threat that kills around 7 million people annually, of which about 6 million deaths are due to direct tobacco use, and 890,000 are attributed to passive smoking. This study assessed prevalence and associated risk factors of tobacco use among pregnant women, 15 to 49 years. Health facility-based analytical cross-sectional study was conducted...

Author(s): John Bosco Alege, Russall Okudra Jurua, and Judith Drazidio

<https://doi.org/10.5897/JPHE2020.1276> (<https://doi.org/10.5897/JPHE2020.1276>) |

Article Number: 82191B066475

[Abstract \(/journal/JPHE/article-abstract/82191B066475\)](/journal/JPHE/article-abstract/82191B066475)

April 2021

Knowledge and adherence to social distancing guidelines in Nigeria during the COVID-19 pandemic

Social distancing refers to actions or steps taken by an individual or groups of individuals with the main purpose of reducing physical and social interaction to curb the spread of infectious disease. This study sought to determine Nigerians' knowledge of social distancing and why most people do not adhere to the guidelines amid the COVID-19 pandemic. A non-probability sampling method was used for this study; data...

Author(s): Ebidor U. Lawani-Luwaji, Pere-ere F. T. Victor and Dorcas B. Esene

<https://doi.org/10.5897/JPHE2020.1242> (<https://doi.org/10.5897/JPHE2020.1242>) |

Article Number: 3097A6266555

[Abstract \(/journal/JPHE/article-abstract/3097A6266555\)](/journal/JPHE/article-abstract/3097A6266555)

April 2021

Awareness of sleeping sickness by the populations of the Bipindi historic focus: Lessons for ownership and sustainability of control interventions

Socio-economic and socio-demographic factors have been considered as critical in disease epidemiology and need to be taken into consideration when designing health interventions. It is therefore strongly recommended to investigate population ownership to ensure sustainability of a

given intervention. To this end, a household-based cross sectional survey was conducted to assess knowledge and perceptions regarding...



Login (<http://ms.academicjournals.org>)

Author(s): Guy R Njitchouang, André Domche, Laurentine Sumo, Jeanne C Sondi-Dissake, Cédric G. Lenou-Nanga, Alphonse Acho and Hugues C. Nana-Djeunga,

<https://doi.org/10.5897/JPHE2021.1312> (<https://doi.org/10.5897/JPHE2021.1312>) |

Article Number: 0DB4C2A66559

[Abstract \(/journal/JPHE/article-abstract/0DB4C2A66559\)](/journal/JPHE/article-abstract/0DB4C2A66559)

April 2021

Factors associated with chronic respiratory disorders in the saleswomen working near Dantokpa's market highways in Cotonou, Benin

Sales around roads, a common activity mainly carried out by women in African urban areas, expose these later to outdoor air pollution (OAP), leading to chronic respiratory diseases (CRD). This research aims at studying associated factors with CRD among these professionals. A cross-sectional, analytical study was conducted among 396 saleswomen working on the outskirts of the main track of Dantokpa's market in...

Author(s): Hervé Agbomakou Gbegnide, Ghislain Emmanuel Sopoh, Denise Assiba Davou, Michel Makoutode, and Gildas Agodokpessi

<https://doi.org/10.5897/JPHE2021.1315> (<https://doi.org/10.5897/JPHE2021.1315>) |

Article Number: C3C824566632

[Abstract \(/journal/JPHE/article-abstract/C3C824566632\)](/journal/JPHE/article-abstract/C3C824566632)

April 2021

HIV-positive status disclosure with stable sexual partner at Gabriel Touré University Hospital, Bamako, Mali, 2017

Preventing new cases of HIV infection and mother-to-child HIV transmission requires knowledge of the factors associated with HIV-positive status disclosure with the sexual partner. Our objective was to determine the factors associated with HIV-positive status disclosure with the stable sexual partner at Gabriel Touré University Hospital, Mali. We conducted a cross-sectional study from February to March 2017 at...

Author(s): Yaya Ballayira, Pauline Kiswendsida Yanogo, Fadima Diallo, Bernard Sawadogo, Simon Antara and Seydou Doumbia

<https://doi.org/10.5897/JPHE2021.1313> (<https://doi.org/10.5897/JPHE2021.1313>) |

Article Number: 2F87DA566634

April 2021

Determinants of internet-based resources for sex education among in-school and out-of-school adolescents in Kogi State, Nigeria

Sex education is a vital aspect of health education. It provides factual knowledge to assist adolescents to avoid sex related problems. Due to the sensitive nature of sex education many adolescents rely on internet resources for information on sex education because it offers information in a confidential manner. The study assessed and compared the determinants of internet based resources for sex education among in and...

Author(s): Fehintola F. O., Ogundele O.A., Uwaila C. U., Adegbenro C. A. and Olowookere S. A.

<https://doi.org/10.5897/JPHE2021.1317> (<https://doi.org/10.5897/JPHE2021.1317>) |

Article Number: 991287266636

[Abstract \(/journal/JPHE/article-abstract/991287266636\)](#)

April 2021

Knowledge, attitudes and perceptions related to covid-19 among Beninese military

The aim of this study was to assess the level of knowledge guiding attitudes, and to highlight the perceptions of Beninese military personnel towards COVID-19. This is a cross-sectional study conducted from May 18 to June 16, 2020 in the garrison of Cotonou through the administration of an anonymous questionnaire to 836 participants. To assess the level of knowledge, major and minor criterion were defined. The level of...

Author(s): Agnès Angélique Houéfa KPADE, Alexis do SANTOS ZOUNON, Léonce AHOUANVOEKE and Félix ATADOKPEDE

<https://doi.org/10.5897/JPHE2021.1318> (<https://doi.org/10.5897/JPHE2021.1318>) |

Article Number: 035D87466638

[Abstract \(/journal/JPHE/article-abstract/035D87466638\)](#)

May 2021

Impact of family planning on maternal and infant mortality in Cameroon:

Protocol for a clustered non-randomized controlled trial

ACADEMIC
JOURNALS

(/)

Login (<http://ms.academicjournals.org>)

The study aimed to assess the impact of family planning on maternal and infant mortality in Tiko CDC plantation camp. This is a clustered non-randomized controlled trial with a predetermined intervention site (Tiko CDC plantation camp) and a control site (Pena Mboko camp). Four clusters were randomly selected in each group using simple ballot and the intervention administered in all clusters in the intervention...

Author(s): Agbor Nathan Emeh, Ngouakam Hermann and Nsagha Dickson Shey

<https://doi.org/10.5897/JPHE2020.1299> (<https://doi.org/10.5897/JPHE2020.1299>) |

Article Number: E2B93C766817

[Abstract \(/journal/JPHE/article-abstract/E2B93C766817\)](/journal/JPHE/article-abstract/E2B93C766817)

May 2021

Prevalence and correlates of physical health conditions in Jamaica and Guyana

The increasing prevalence of non-communicable diseases remains an important source of concern in the Caribbean and Latin American regions. This study examines rates and the associated socio-demographic correlates of physical health indicators in Jamaica and Guyana. Area probability cross-sectional data were collected on 1,218 Jamaicans and 2,068 Guyanese participants in 2005. Physician- diagnosed hypertension, diabetes...

Author(s): Krim K. Lacey, Karen P. Sears, Tazhmoye V. Crawford, Letroy O. Cummings, Sasha R. Drummond-Lewis, Rohan D. Jeremiah and James S. Jackson

<https://doi.org/10.5897/JPHE2021.1319> (<https://doi.org/10.5897/JPHE2021.1319>) |

Article Number: 259E46F66823

[Abstract \(/journal/JPHE/article-abstract/259E46F66823\)](/journal/JPHE/article-abstract/259E46F66823)

May 2021

Analysis of the environmental factors associated with deaths from road traffic crashes in Benin from 2008 to 2015

In most African countries, road safety policies are mainly focused on the human factor. In order to inform policy makers about the role of other factors in road mortality, this study aims to analyse the road and environmental factors associated with traffic mortalities in Benin. This is a cross-sectional study using secondary data from road accidents collected by the police between 2008 and 2015. The database included...

Author(s): Donatien Daddah, Yolaine Glèlè Ahanhanzo, Alphonse Kpozehouen, Bella Hounkpe Dos Santos,

Hugues Akpan, Edgard-Marius Ouendo and Alain Leveque (<http://ms.academicjournals.org>)

<https://doi.org/10.5897/JPHE2021.1321> (<https://doi.org/10.5897/JPHE2021.1321>) |

Article Number: 30032E166861

[Abstract \(/journal/JPHE/article-abstract/30032E166861\)](/journal/JPHE/article-abstract/30032E166861)

May 2021

Comparative screening for cervical cancer and women's knowledge of the disease at the Douala General Hospital, Cameroon

Cervical cancer screening is not routinely done in Cameroon because of poor knowledge of the disease. This study evaluated the validity of VIA test, assessed women's knowledge on cervical cancer and assessed the relationship between knowledge score and previous screening participation. Between June and September 2018, this cross-sectional study enrolled 256 women aged between 25 and 65 years at the Douala General...

Author(s): Bernard Wabo, Dickson Shey Nsagha, Théophile Njamèn Nana and Clément Jules Nguédia Assob

<https://doi.org/10.5897/JPHE2021.1310> (<https://doi.org/10.5897/JPHE2021.1310>) |

Article Number: A93637266915

[Abstract \(/journal/JPHE/article-abstract/A93637266915\)](/journal/JPHE/article-abstract/A93637266915)



[Current Issue \(/journal/JPHE/edition/January-March_2022\)](/journal/JPHE/edition/January-March_2022) >

[View all articles \(/journal/JPHE/articles\)](/journal/JPHE/articles) >

[View articles in press \(/JPHE/inpress\)](/JPHE/inpress) >

[Abstracting and Indexing \(/journal/JPHE/about/abstracting-and-indexing\)](/journal/JPHE/about/abstracting-and-indexing)

[Archiving Policy \(/journal/JPHE/about/archiving-policy\)](/journal/JPHE/about/archiving-policy)

[Article Metrics \(/journal/JPHE/about/article-metrics\)](/journal/JPHE/about/article-metrics)

Contact Us (</journal/JPHE/about/contact-us>)



Login (<http://ms.academicjournals.org>)



Copyright & Permissions (</journal/JPHE/about/copyright-permissions>)

Editorial Policies (</journal/JPHE/about/editorial-policies>)

Metadata Harvesting (</journal/JPHE/about/metadata-harvesting>)

Open Access Policy (</journal/JPHE/about/open-access-policy>)

Peer Review (</journal/JPHE/about/peer-review>)

Publication Fees (</journal/JPHE/about/publication-fees>)

Publication Process (</journal/JPHE/about/publication-process>)

Research & Publication Ethics (</journal/JPHE/about/research-publication-ethics>)

Reviewer's Guidelines (</journal/JPHE/about/reviewers-guidelines>)

Submitting Your Manuscript (</journal/JPHE/about/submitting-your-manuscript>)

Waiver Policy (</journal/JPHE/about/waiver-policy>)

Visit JPHE Facebook Page (<https://www.facebook.com/Journal-of-Public-Health-and-Epidemiology-108056804456171>)

Advertisement

Advertisement



Login (<http://ms.academicjournals.org>) 

[SUBSCRIBE TO RSS \(/all_articles.rss\)](#) >

[SUBMIT MANUSCRIPT \(http://ms.academicjournals.org/\)](http://ms.academicjournals.org/) >

[CONFERENCES \(http://conferences.academicjournals.org\)](http://conferences.academicjournals.org) >



AUTHORS

[Submit Manuscript](#)

[Track Manuscript](#)

[Publication Ethics](#)

[Editorial Policies](#)

[Publication Fee](#)

[Waiver Policy](#)

[Print Request](#)

[FAQ](#)

REVIEWERS

[Reviewers Guidelines](#)

[Peer Review](#)

EDITORS

[Editors](#)


READERS

[Journals](#)

[Proceedings](#)

News



Login (<http://ms.academicjournals.org>) 

[Search Articles](#)

[Conference Announcements](#)

[Perspectives](#)

[Subscribe to RSS](#)

POLICIES

[Open Access](#)

[Creative Commons](#)

[CrossMark Policy](#)

[Digital Archiving](#)

[Self-Archiving](#)

[Article Copyright](#)

ABOUT

[About Us](#)

[Memberships & Standards](#)

[Open Archives Initiatives](#)

[Support Center](#)

[Subscribe to RSS](#)

[Terms of use](#)

[Contact](#)

© Academic Journals 2002 - 2022

Full Length Research Paper

Environmental and behavioural factors associated with *Mycobacterium ulcerans* infection in the district of Lalo in Benin: A case-control study

Anagonou Gimatal Esai^{1,7*}, Sopoh Ghislain Emmanuel², Biaou Chabi Alphonse^{1,2}, Barogui Yves Thierry^{3,7}, Wadagni Anita Carolle^{1,2}, Gnimavo Sètonджи Ronald^{2,4}, Ayelo Gilbert Adjimon⁵, Saka Kora Eric¹, Houezo Jean Gabin¹ and Johnson Roch Christian^{6,7}

¹National Buruli Ulcer and Leprosy Control Program, Benin.

²Regional Institute of Public Health, Benin.

³Buruli Ulcer Screening and Treatment Center of Lalo, Benin.

⁴Buruli Ulcer and Leprosy Screening and Treatment Center, Raoul et Madeleine Follereau of Pobè, Benin.

⁵Buruli Ulcer Screening and Treatment Center of Allada, Benin.

⁶Foundation Raoul Follereau, Benin.

⁷Inter-Faculty Environmental Research Center for Sustainable Development, University of Abomey-Calavi, Benin.

Received 21 January, 2021; Accepted 3 March, 2021

The mode of transmission of Buruli ulcer (BU) is not yet well understood. This study aimed to identify risk factors for BU in the district of Lalo in Benin. This is a case-control study taking into account all cases of BU detected from 2013 to 2018 and treated at the Buruli's ulcer Screening and Treatment Center (CDTUB) of Lalo. For each case, two controls were matched according to age and sex. Conditional logistic regression was used to compare risk factors in cases and controls. A total of 59 BU cases and 118 controls were enrolled. After adjustment for potential confounding factors, illiteracy (adjusted odd ratio [aOR] = 18.19; 95% confidence interval [CI] = 1.50-219.45), unawareness of BU risk factors (aOR = 48.21; 95% CI = 4.67-497.15), bathing in rivers or ponds (aOR = 23.66; 95% CI = 2.82-198.52), field activities in mud (aOR = 60.58; 95% CI = 7.44 – 493.09) and not wearing protective clothing during field activities (aOR = 42.78; 95% CI = 2.05 – 892.33) were associated with BU. It is necessary to mitigate risk factors by implementing actions in the field of water, sanitation and hygiene (WASH) and by insisting on the wearing of protective equipment during agricultural activities and/or contact with surface water.

Key words: Buruli ulcer, *Mycobacterium ulcerans*, risk factors, case-control study, Lalo.

INTRODUCTION

Mycobacterium ulcerans (*Mu*) is the pathogen responsible for Buruli ulcer (BU), a neglected tropical disease (Gangbo et al., 2011). It is the third most common mycobacterial disease (after leprosy and tuberculosis) that affects immunocompetent people worldwide (Hotez

and Kamath, 2009). It affects people of all ages – mostly children (Stoffel et al., 2005; Kanga et al., 2006) – and occurs in various forms. The most serious forms are extensive skin ulcerations, sometimes leading to disabling sequelae (Adu and Ampadu, 2015). This disease has

been reported in 33 countries worldwide, with the majority of cases in the tropical zone of West and Central Africa (Hotez et al., 2007; World Health Organization, 2015). Studies have also identified the disease in Australia, China and Japan (Huang and Johnson, 2014). In Benin, BU was first diagnosed in 1977 by Sister Aguiar at the Saint Camille Hospital of Dogbo in the Couffo Department. Currently, it is endemic in eight of the twelve departments in Benin: the Atlantic, the Collines, the Couffo, the Littoral, the Mono, the Ouémé, the Plateau and the Zou (Johnson et al., 2005). These departments are located in the south of the country. From 1989 to 2019, more than 13,000 new cases were detected (PNLLUB, 2019). The emergence of the disease over the past 50 years, as well as its geographic distribution, has been largely associated with aquatic ecosystems, particularly in areas with slow and stagnant water flow (Wagner et al., 2008; Marion et al., 2011).

The epidemiology of BU is not yet well known (Portaels et al., 2001; WHO, 2017), but studies in several endemic regions have associated its occurrence with environmental disturbances resulting from human activities such as dam construction, mining, construction of artificial lakes and extension of swamps for rice and fish farming (Brou et al., 2008; Wagner et al., 2008b; Landier et al., 2014; Aboagye et al., 2017).

The exact mode of transmission of *Mu* to humans is unclear; however, several studies have shown that the pathogen is found in aquatic ecosystems (Wagner et al., 2008a; Marion et al., 2011). Since its transmission is not clearly understood in endemic communities, potential environmental and behavioural risk factors identification can help define preventive measures to reduce the number of cases. Potential risk factors appear to be geographically specific. In Ghana, for example, practicing agriculture in swampy areas, land cultivation in short outfits, insect bites, applying leaves to wounds plus wading in rivers, have been identified in studies as risk factors (Raghunathan et al., 2005a; Aboagye et al., 2017). In Tissalé, Ivory Coast, it was identified that regular contact with unprotected surface water and lack of protective equipment during agricultural activities were the main factors associated with the risk of contracting BU (N'krumah et al., 2016). In Togo, factors such as age, receiving insect bites near a river in older children, and bathing with water from open-pit drilling remain potential risk factors that increased *Mu* infection (Maman et al., 2018b). In Australia, the risk of BU was associated with mosquito bites on the lower legs or arms (Quek et al., 2007). These studies show that the risk factors associated with BU tend to vary from one locality to

another. This could probably be due to geographical, environmental and behavioural differences. In Benin, few studies have specifically addressed BU risk factors. Thus, the present case-control study aims to elucidate the potential environmental and behavioural risk factors in the district of Lalo, known as one of the most endemic districts for BU in Benin.

MATERIALS AND METHODS

Study framework

The study is conducted in southern Benin, in the district of Lalo located in the department of Couffo, in the south of the country. Notably, 746 of the 4,817 cases of BU screened from January, 1st 2008 to December, 31st 2018 came from this district (PNLLUB, 2018). Partitioned into 11 subdistricts and 61 villages, Lalo's district is one of the six administrative subdivisions of the department of Couffo and covers an area of 432 km², or 0.8% of the total area of Benin (Biaou, 2006). Its population is estimated at approximately 138,451 based on projections from 2018 (INSAE, 2013) (Figure 1).

Lalo has a Guinean Sudanese-type climate, characterized by small temperature differences of approximately 27°C (Biaou, 2006). This type of climate allows it to have a succession of four seasons per year (an alternation of two dry and two rainy seasons). The annual average rainfall ranges from 900 to 1,100 mm, and the relative humidity can reach 85% (Biaou, 2006). In recent decades, rains have become increasingly random, and drought sequences are observed in the middle of the rainy season. The months of December and January suffer the increasing depression of the harmattan, whose breath dries and promotes a high thermal amplitude during the day. Like most municipalities in the Couffo department, it is located on the Aplahoué plateau. The morphological and topographical study of this relief shows that it is a clay plateau region with an average altitude of 80 m ending in a clay depression: Tchi depression (Biaou, 2006). These climatic conditions and soil types that characterize the district favour dense vegetation, the presence of rivers, lakes, slow-flowing rivers, ponds and swampy areas that are favourite areas of *Mu*, the pathogen responsible for the BU. The economic activities of the people in this commune are mainly agriculture and trade affairs.

Study design and population

This is a case-control study taking into account all cases of BU detected from January, 1st 2013 to December, 31st 2018 in the district of Lalo and handled at the Buruli Ulcer Screening and Treatment Center (CDTUB) of Lalo and confirmed by Polymerase Chain Reaction (PCR). In each of the identified cases, two controls are matched.

Participants

A case has been defined as any person living in the district of Lalo and showing off clinical signs of the disease as defined by the WHO

*Corresponding author. E-mail: esaianagonou@yahoo.fr.

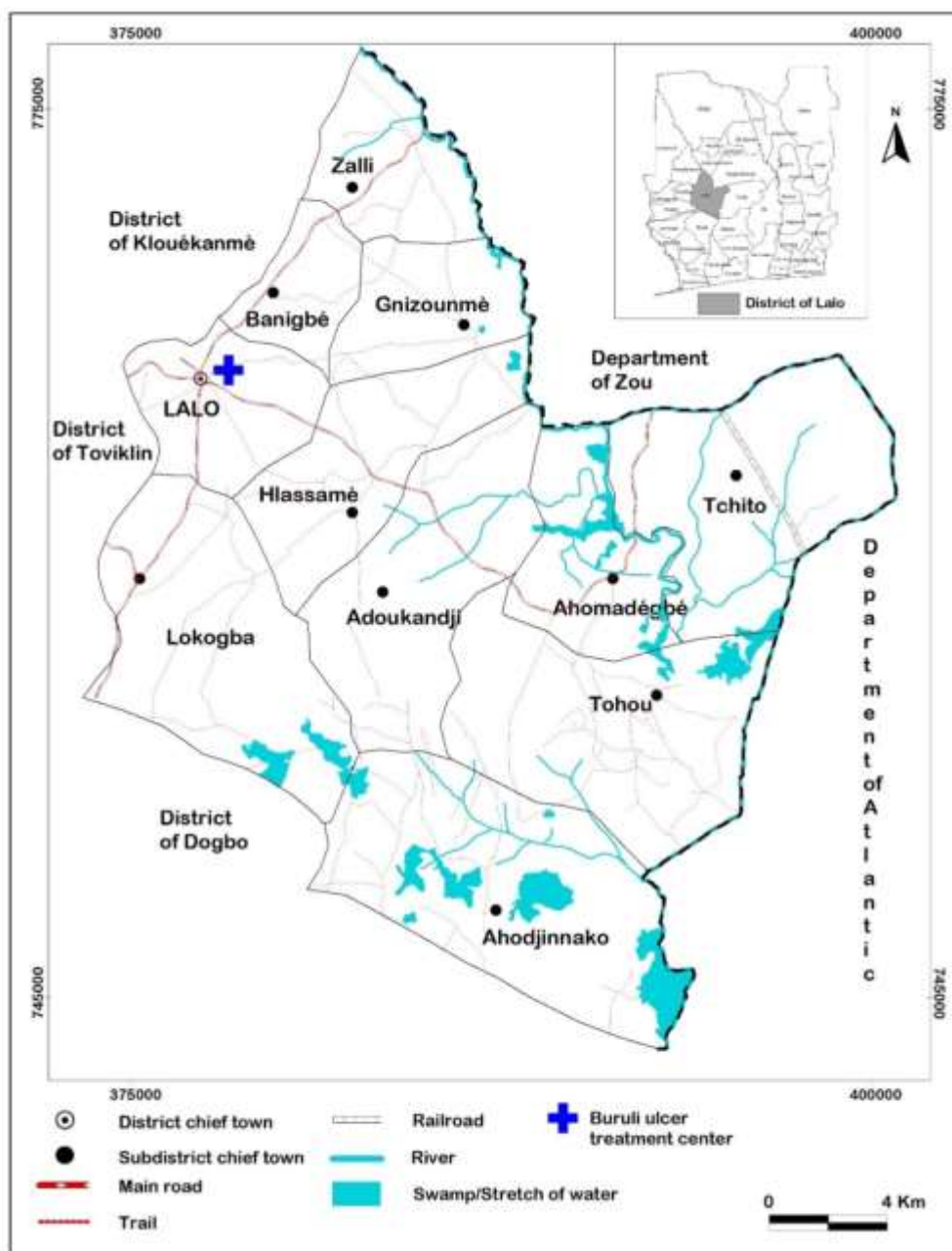


Figure 1. Administrative map of Lalo district.

(World Health Organization, 2012), confirmed by PCR and registered in register BU 02 of the WHO. Controls are defined as persons of the same age (± 5 years) and sex with no signs or symptoms of BU.

Data collection

The patients included in the study were recruited retrospectively from Lalo's Buruli Ulcer Screening and Treatment Center database. They have been actively identified in the community. Recruitment

was voluntary; trained people went to the homes of the selected cases to obtain their participation consent. After explanation of the study's purpose to the participants and of their consent, two matched controls were randomly selected from the same environment as the case (neighbourhood, village or hamlet). If one of the participants was not available, a second pass was scheduled. A standardized questionnaire was administered to all selected participants. For those who could not answer in French, the interview was conducted in the local language. For children under the age of ten, most of the responses, particularly those related to occupation and lifestyle in the face of illness, were given by the

parents.

Variables

The variables involved in this study relate to demography, environment and environmental practices. We also studied outdoor behaviour and habits, including clothing worn, occupations and activities associated with the aquatic environment. Cases were asked to limit their responses to the year prior to the onset of their first signs of the disease; the same condition was also explained to those of the control group. Contacts who were fluent in the participants' native language administered the questionnaires with the help of community volunteers.

Data processing and statistical analysis

Data collected were captured twice using Microsoft Excel 2010 software and analysed using Epi Info® 7 and Stata 14 software. BU was the dependent variable, while sociodemographic factors, knowledge, attitude and practices of participants, lifestyles and workplaces in the environment were independent variables. All variables were described by proportions. A univariate analysis was performed to describe the association between BU and the independent variables. The significance threshold was 5%. Variables with a P-value less than or equal to 0.2 and highlighted by other studies as associated variables were selected for multivariate analyses. Conditional logistic regression was used with a progressive top-down elimination process to identify variables significantly associated with BU to control for possible confounding factors in the model. P-values of 0.05 were considered statistically significant.

Ethical aspects

The present study was authorized by the health authorities of the National Buruli Ulcer and Leprosy Control Program (PNLLUB) of Benin and by those of the district of Lalo. The participants gave their verbal consent. The data were treated with strict respect for confidentiality and anonymity.

RESULTS

Sociodemographic characteristics of participants

A total of 59 BU cases and 118 controls were enrolled in this study (Table 1). Of the 59 BU cases, 27(45.76%) were male, so the sex/ratio (male/female) was 0.8. The median age of the cases was 12 years (Q1 = 6; Q3 = 28), ranging from 1 to 60 years. The majority of them were under the age of 15 (35 cases or 59.32%) and were single (42 cases or 72.2%). Their main activity was agriculture (52 cases or 88.14%). Of the 59 BU cases surveyed, 33 (55.93%) had not received formal education.

Of the 118 controls, 54 (45.76%) were male, so the sex/ratio (male/female) was 0.8. The median age was 13 years (Q1 = 7; Q3 = 26), ranging from 1 to 60 years. More than half of them were under the age of 15 (69 or 58.47%), and 81 were single (68.64%). Their main

activity was agriculture (96 or 81.36%). The data showed that 54 (45.76%) had not received formal schooling.

Clinical characteristics of cases

All cases from the study were confirmed by PCR. Based on Table 2, the predominant clinical form is the ulcerated form (43 cases or 72.88%). Most lesions were present in the lower limbs (30 cases or 50.85%). Serious lesions (category 3) accounted for 33.9%.

Univariate analysis of risk factors for contracting Buruli ulcer in the district of Lalo in Benin Sociodemographic factors linked with BU

Illiteracy was significantly associated with a higher risk of developing BU (OR=5.35-95%; CI=1.77-16.15) (Table 3). A lack of knowledge of the causes (OR = 2.80; 95% CI = 1.34-5.88) and risk factors for the disease (OR = 5.56; 95% CI = 2.08 - 14.90) is positively associated with its onset.

Environmental and behavioural factors linked to BU onset

Field activities in the mud significantly increased the risk of developing BU (OR = 5.67; 95% CI = 2.95-10.87). Individuals who used surface water sources (OR = 3.89; 95% CI = 1.46-10.34) and baths in rivers or ponds (OR = 4.71; 95% CI = 2.26-9.80) were much more likely to contract BU (Table 3). However, wearing footwear during field activities (OR = 0.15; 95% CI = 0.04-0.54) and wearing protective clothing during cultivation (OR = 5.10; 95% CI = 1.48 -17.56) significantly reduced this risk.

Multivariate analysis of associated risk factors for contracting Buruli ulcer in the district of Lalo in Benin

After adjusting for potential confounding factors, we identified that illiteracy (aOR = 18.19; 95% CI = 1.50-219.45), lack of awareness of BU risk factors (aOR = 48.21; 95% CI = 4.67-497.15), swimming in rivers or ponds (aOR = 23.66; 95% CI= 2.82-198.52), field activities in mud (aOR = 60.58; 95% CI = 7.44 – 493.09) and not wearing protective clothing during field activities (aOR = 42.78; 95% CI = 2.05 – 892.33) were associated with the occurrence of BU (Table 4).

DISCUSSION

Our results showed that poor knowledge of the causes

Table 1. Sociodemographic characteristics of BU cases and controls.

Variables	BU Cases n (%)	Controls n (%)
	59 (100)	118 (100)
Gender		
Male	27 (45.76)	54 (45.76)
Female	32 (54.24)	64 (54.24)
Age (year)		
Less than 10	25 (42.37)	43 (36.44)
10 to 14	10 (16.95)	26 (22.03)
15 to 35	14 (23.73)	29 (24.58)
36 and more	10 (16.95)	20 (16.95)
Matrimonial status		
Single	42 (71.19)	81 (68.64)
Married	17 (28.81)	37 (31.36)
Religion		
Christianism	29 (49.15)	69 (58.47)
Islam	1 (1.69)	0 (0.00)
Endogens	27 (45.76)	47 (39.83)
No Religion	2 (3.39)	2 (1.69)
Ethnic		
Fon and relatives	29 (49.15)	60 (50.85)
Adja and relatives	30 (50.85)	57 (48.31)
Others	0 (0.00)	1 (0.85)
Education		
Uneducated	33 (55.93)	54 (45.76)
Elementary	22 (37.29)	53 (44.92)
High school	4 (6.78)	11 (9.32)
Occupation*		
No occupation	3 (5.08)	4 (3.39)
Farmers	52 (88.14)	96 (81.36)
Others	4 (6.78)	18 (15.25)

* The main occupation was requested for 18 and over aged participants; for those under 18, the main occupation of the parents was considered.

and risk factors for BU increases the risk of developing the disease. This situation could be explained by the low level of education of the populations of the district, which is a rural area (Biaou, 2006). Indeed, in the framework of our study, uneducated subjects have a significantly higher risk of having BU than those whose educational level is higher or equal to primary school. These results are similar to those of a study conducted in Cameroon (Puillot et al., 2007). According to these authors, the low level of education (lower to secondary) of the subjects

involved in their study was observed as a significant risk factor for BU. Therefore, improving education for populations in endemic areas would reduce the risk of BU. Studies have indeed shown that education improves health because it increases the effectiveness of action, strengthening the sense of personal control that encourages and enables a healthy lifestyle (Ross and Wu, 1995; Hahn and Truman, 2015).

Our analyses did not reveal a significant association between the proximity of water bodies to the subjects'

Table 2. Clinical characteristics of BU cases.

Variables	Effective (n)	Frequency (%)
Clinical form		
Nodule	1	1.69
Plaque	13	22.03
Ulcer	43	72.88
Osteomyelitis	2	3.39
Localization*		
UP	23	38.98
LL	30	50.85
Others	6	10.17
Category		
Category 1	6	10.17
Category 2	33	55.93
Category 3	20	33.9

*Localization: UP = Upper limbs; LL = Lower limbs; Others = Abdomen, Thorax, Back.

Table 3. Univariate analysis of chosen variables linked to Buruli ulcer in Lalo's district, Benin (2013 – 2018).

Characteristics	Cases n (%)	Controls n (%)	OR (IC 95%)	P-value
Education				
Uneducated	33 (55.93)	43 (36.44)	5.35 (1.77 - 16.15)	0.003
Educated (Elementary and high school)	26 (44.07)	75 (63.56)	1	
Ethnic				
Fon and relatives	29 (49.15)	60 (50.95)	1	0.656
Adja and relatives	30 (50.85)	58 (49.15)	1.34 (0.36 - 4.92)	
Occupation				
No occupation	3 (5.08)	4 (3.39)	5.05 (0.62 - 40.72)	0.128
Farmers	52 (88.14)	96 (81.36)	3.37 (0.88 - 12.79)	0.074
Others	4 (6.78)	18 (15.25)	1	
House wall hardware				
Branches or slabs wall	10 (16.95)	22 (18.64)	1.08 (0.22 - 5.31)	0.922
Clay wall	43 (72.88)	77 (65.26)	1.77 (0.66 - 4.73)	0.253
Brick or metal wall	6 (10.17)	19 (16.10)	1	
Roof-covering				
Straw roof	11 (18.64)	22 (18.64)	1 (0.42 - 2.33)	1
Slab or metal	48 (81.36)	96 (81.36)	1	
Proximity swamps and dwellings				
Yes	34 (57.63)	63 (53.39)	1.54 (0.56 - 4.17)	0.394
No	25 (43.37)	55 (46.61)	1	
Proximity rivers/watercourse and dwellings				
Yes	22 (37.29)	49 (41.53)	0.68 (0.26 - 1.76)	0.431

Table 3. Contd.

No	37 (62.71)	69 (58.47)	1	
Pile of junk near houses				
Yes	49 (83.05)	103 (87.29)	0.66 (0.25 - 1.73)	0.407
No	10 (16.95)	15 (12.71)	1	
Field activities in mud				
Yes	45 (76.27)	29 (24.58)	5.67 (2.95 - 10.87)	< 0.001
No	14 (23.73)	89 (75.42)	1	
Footwear while working				
Yes	6 (11.54)	32 (33.33)	0.15 (0.04 - 0.54)	0.004
No	46 (88.46)	64 (66.67)	1	
Wearing protective outfits during field activities				
Yes	03(5.08)	26(22.03)	1	
No	56(94.92)	92(77.97)	5.10(1.48 -17.56)	0.002
Water supply				
Surface water	14 (23.73)	10 (8.47)	3.89 (1.46 - 10.34)	0.006
Drillings / wells	45 (76.27)	108 (91.53)	1	
Swimming into rivers/ponds				
Yes	30 (50.85)	20 (19.95)	4.71 (2.26 - 9.80)	<0.001
No	29 (49.15)	98 (83.05)	1	
Understanding of causes				
Low	32 (54.24)	40 (30.90)	2.80 (1.34 - 5.88)	0.006
Good	27 (45.76)	78 (66.10)	1	
Risk factors understanding				
Low	49 (83.05)	68 (57.63)	5.56 (2.08 - 14.90)	0.001
Good	10 (16.95)	50 (42.37)	1	

homes and the risk of contracting BU. The pathogen *Mu*, which is responsible for BU, is found in the aquatic environment of endemic areas, as demonstrated by several studies (Wagner et al., 2008a; Marion et al., 2011; Maman et al., 2018a). Therefore, the disease could only occur through direct and frequent contact of the populations with this contaminated environment. Indeed, swimming in rivers and ponds has been identified as being significantly associated with the risk of contracting BU in the district of Lalo. Similar results were also found in Togo (Maman et al., 2018b), Ghana (Raghunathan et al., 2005b; Kenu et al., 2014), the Ivory Coast (N'krumah et al., 2016) and Cameroon (Pouillot et al., 2007). These daily life behaviours of the subjects involve direct contact with the aquatic environment that houses *Mu*, thus

increasing contamination risks.

Univariate analysis revealed that being a grower is not significantly associated with the risk of BU. However, farming in mud significantly increases the risk of contracting BU. Our results are consistent with other epidemiological studies conducted in BU endemic areas (Marston et al., 1995; Kenu et al., 2014; Wu et al., 2015; Aboagye et al., 2017). The cases of BU involved in our study are mostly growers (88%); among them, many conduct their farming activities in the mud as well as the controls. Agricultural activities in wetlands or even swampy areas put these cases in frequent contact with wet or muddy soils. Studies have been able to identify *Mu* strains in soil and decompose organic matter under water, and they can sometimes live for several months

Table 4. Multivariate model of risk factors for Buruli ulcer in the district of Lalo in Benin (2013 – 2018).

Variables	Adjusted OR (IC à 95%)	P-value
Education		
Educated (Elementary / High school)	1	
Uneducated	18.19 (1.50 - 219.45)	0.022
Wearing protective outfits during field activities		
Yes	1	
No	42.78 (2.05 - 892.33)	0.015
Field activities in mud		
Yes	60.58 (7.44 - 493.09)	< 0.001
No	1	
Swimming into rivers/ponds		
Yes	23.66 (2.82 - 198.52)	0.004
No	1	
Risk factors understanding		
Bas	48.21 (4.67 - 497.15)	0.001
Good	1	

(Bratschi et al., 2014; Aboagye et al., 2016; Tian et al., 2016a, b; Röltgen et al., 2017). This may lead us to believe that BU cases may have become infected with muddy soils through micro trauma or open wounds on their skin (Yotsu et al., 2015). These data clearly confirm that agriculture in wetlands or swampy areas is a potential risk factor for BU. In addition, we found that wearing protective clothing during field activities guards them against BU. These results are consistent with several studies (N'krumah et al., 2016; Aboagye et al., 2017; Maman et al., 2018). In fact, most people having BU and involved in farming do not wear protective outfits. This may be due to the frequent warm weather conditions in most African countries that encourage farmers to wear less protective clothing during farming to work at ease (Aboagye et al., 2017). Data from the literature have shown that Buruli ulcer is much more prevalent in youth younger than 15 years of age (World Health Organization, 2012; Yotsu et al., 2015); our results were similar. Nevertheless, some study results differ from our findings. Indeed, the results of a study conducted in Nigeria over 2014 and 2015 showed a predominance of the disease in subjects 15 years old (Meka et al., 2016). Note that in Australia, some studies have shown a predominance of the disease in adult subjects (Yerramilli et al., 2017; Walker et al., 2019). This discrepancy between our study and that of Nigeria could be explained by differences between the study periods. In our context, the study was broader (12 years), which allowed us to

have much more data for analysis, unlike that of Nigeria (May 2014 to September 2015 or approximately 16 months). Dissimilarities between our study and those conducted in Australia could be explained by two factors. First, we can hypothesize that children in Africa are much more exposed to the aquatic environment than those in Australia through recreational activities such as walking or bathing in streams or bodies of water. Second, it has been postulated that African strains of *Mu* are more virulent than strains endemic to Australia (Mve-Obiang et al., 2003). It is important to note, however, that many other factors, such as genetic factors, socioeconomic context, cultural views on disease and the availability of health care facilities, play an important role in determining the severity of Buruli ulcer.

Case-control studies have several limitations, including the risk of recall bias. Twenty-five of the patients were under the age of 10. For this category of participants, both cases and controls, the answers to the questions were given by the parents/tutors and may have been biased. Our study may also suffer from selection bias, as we only recruited cases from the district of Lalo and took over some from the CDTUB of Lalo. Training and awareness sessions were conducted, and participants in our study may have already received basic information about the disease. This is likely to introduce recall bias. We tried to minimize this bias in the current study by using a well-designed (culturally and contextually sensitive) and pretested questionnaire. Investigators

were also trained to ensure that appropriate responses were obtained from respondents to minimize any form of bias or confounding effects in the results.

CONCLUSION

Our study has shown that contact with unprotected water (surface water, swamps and wetlands) in daily activities such as agriculture and swimming is the main factor associated with Buruli ulcer. This factor would be favoured by the low level of education of the populations and the unawareness or lack of knowledge of the disease's risk factors. It is important to mitigate risk factors in endemic communities by implementing actions in the field of water, sanitation and hygiene (WASH) and emphasizing the use of protective equipment and clothing during rural activities and/or contact with surface water.

CONFLICT OF INTERESTS

The authors have not declared any conflict of interests.

ACKNOWLEDGEMENTS

The authors appreciate the team members of the National Buruli Ulcer Control Program of Bénin for their administrative and technical support in the achievement of this study and also thank Raoul Follereau Foundation (<http://www.raoul-follereau.org>), Follereau Luxembourg Foundation (<http://www.fll.lu>), ANESVAD Foundation (<http://www.anesvad.org/fr/>) and the World Health Organization for their support in the control of Buruli ulcer in Bénin.

REFERENCES

- Aboagye SY, Asare P, Otchere ID, Koka E, Mensah GE, Yirenya-Tawiah D, Yeboah-Manu D (2017). Environmental and Behavioral Drivers of Buruli Ulcer Disease in Selected Communities along the Densu River Basin of Ghana: A Case-Control Study. *The American Journal of Tropical Medicine and Hygiene* 96(5):1076-1083. <https://doi.org/10.4269/ajtmh.16-0749>
- Aboagye SY, Danso E, Ampah KA, Nakobu Z, Asare P, Otchere ID, Röltgen K, Yirenya-Tawiah D, Yeboah-Manu D (2016). Isolation of Nontuberculous Mycobacteria from the Environment of Ghanaian Communities Where Buruli Ulcer Is Endemic. *Applied and Environmental Microbiology* 82(14):4320-4329. <https://doi.org/10.1128/AEM.01002-16>
- Adu EJK, Ampadu E (2015). Mycobacterium ulcerans disease in the middle belt of Ghana: An eight-year review from six endemic districts. *International Journal of Mycobacteriology* 4(2):138-142. <https://doi.org/10.1016/j.ijmyco.2015.03.006>
- Biaou CF (2006) Monographie de la commune de Lalo. 68p
- Bratschi MW, Ruf M-T, Andreoli A, Minyem JC, Kerber S, Wantong FG, Pritchard J, Chakwera V, Beuret C, Wittwer M, Noumen D, Schürch N, Um Book A, Pluschke G (2014). Mycobacterium ulcerans persistence at a village water source of Buruli ulcer patients. *PLoS Neglected Tropical Diseases* 8(3):2756. <https://doi.org/10.1371/journal.pntd.0002756>
- Brou T, Broutin H, Elguero E, Asse H, Guegan J-F (2008). Landscape Diversity Related to Buruli Ulcer Disease in Côte d'Ivoire. *PLoS Neglected Tropical Diseases* 2(7):271. <https://doi.org/10.1371/journal.pntd.0000271>
- Gangbo F, Brun LV, Sopoh GE, Johnson RC, Ayadji E, Barogui YT, Houézo JG, Kestens L, Anagonou SY (2011). Aspects épidémiologiques, cliniques et histopathologiques de l'ulcère de Buruli traité pendant quatre ou huit semaines par la streptomycine associée à la rifampicine : à propos de 56 cas. *JAMO* 5(2):11
- Hahn RA, Truman BI (2015). Education Improves Public Health and Promotes Health Equity. *International Journal of Health Services: planning, administration, evaluation* 45(4):657-678. <https://doi.org/10.1177/0020731415585986>
- Hotez PJ, Kamath A (2009). Neglected Tropical Diseases in Sub-Saharan Africa: Review of Their Prevalence, Distribution, and Disease Burden. *PLoS Neglected Tropical Diseases* 3(8):412. <https://doi.org/10.1371/journal.pntd.0000412>
- Hotez PJ, Molyneux DH, Fenwick A, Kumaresan J, Sachs SE, Sachs JD, Savioli L (2007). Control of neglected tropical diseases. *The New England Journal of Medicine* 357(10):1018-1027. <https://doi.org/10.1056/NEJMra064142>
- Huang GKL, Johnson PDR (2014). Epidemiology and management of Buruli ulcer. *Expert Review of Anti-infective Therapy* 12(7):855-865. <https://doi.org/10.1586/14787210.2014.910113>
- INSAE (2013). Quatrième recensement général de la population et de l'habitat: résumé de la synthèse des résultats. Ministère du Développement, de l'Analyse Économique et de la Prospective, Cotonou, Bénin. p. 4. Report No.: RGPH-4
- Johnson RC, Sopoh GE, Boko M, Zinsou C, Gbovi J, Makoutode M, Portaels F (2005). Distribution de l'infection à Mycobacterium ulcerans (Ulcère de Buruli) dans la commune de Lalo au Bénin. *Tropical Medicine and International Health* 10(9):863-871
- Kanga JM, Kacou ED, Kouamé K, Kassi K, Kaloga M, Yao JK, Dion-Lainé M, Avoaka LE, Yoboué-Yao P, Sangaré A, Ecra JE, Ahogo C, Djédjé MS, Kadiri AJ, Ayé C (2006). [Fighting against Buruli ulcer: the Côte-d'Ivoire experience]. *Bulletin de la Société de Pathologie Exotique* (1990) 99(1):34-38
- Kenu E, Nyarko KM, Seefeld L, Ganu V, Käser M, Lartey M, Calys-Tague BNL, Koram K, Adanu R, Razum O, Afari E, Binka FN (2014). Risk Factors for Buruli Ulcer in Ghana—A Case Control Study in the Suhum-Krabo-Coaltar and Akuapem South Districts of the Eastern Region. *PLoS Neglected Tropical Diseases* 8(11):3279. <https://doi.org/10.1371/journal.pntd.0003279>
- Landier J, Gaudart J, Carolan K, Lo Seen D, Guégan J-F, Eyangoh S, Fontanet A, Texier G (2014). Spatio-temporal Patterns and Landscape-Associated Risk of Buruli Ulcer in Akonolinga, Cameroon. *PLoS Neglected Tropical Diseases* 8(9):3123. <https://doi.org/10.1371/journal.pntd.0003123>
- Maman I, Tchacondo T, Kere AB, Beissner M, Badziklou K, Tedihou E, Nyaku E, Amekuse K, Wiedemann FX, Karou DS, Bretzel G (2018a). Molecular detection of Mycobacterium ulcerans in the environment and its relationship with Buruli ulcer occurrence in Zio and Yoto districts of maritime region in Togo. *PLoS Neglected Tropical Diseases* 12(5). <https://doi.org/10.1371/journal.pntd.0006455>
- Maman I, Tchacondo T, Kere AB, Piten E, Beissner M, Kobara Y, Kossi K, Badziklou K, Wiedemann FX, Amekuse K, Bretzel G, Karou DS (2018b). Risk factors for Mycobacterium ulcerans infection (Buruli Ulcer) in Togo — a case-control study in Zio and Yoto districts of the maritime region. *BMC Infectious Diseases* 18. <https://doi.org/10.1186/s12879-018-2958-3>
- Marion E, Landier J, Boisier P, Marsollier L, Fontanet A, Le Gall P, Aubry J, Djeunga N, Umboock A, Eyangoh S (2011). Geographic expansion of Buruli Ulcer disease, Cameroon. *Emerging Infectious Diseases* 17(3):551-552
- Marston BJ, Diallo MO, Jr CRH, Diomande I, Saki MZ, Kanga J-M, Patrice G, Lipman HB, Ostroff SM, Good RC (1995). Emergence of Buruli Ulcer Disease in the Daloa Region of Cote D'Ivoire. *The American Journal of Tropical Medicine and Hygiene* 52(3):219-224.

- <https://doi.org/10.4269/ajtmh.1995.52.219>
- Meka AO, Chukwu JN, Nwafor CC, Oshi DC, Madichie NO, Ekeke N, Anyim MC, Alphonsus C, Mbah O, Uzoukwa GC, Njoku M, Ntana K, Ukwaja KN (2016). Diagnosis delay and duration of hospitalisation of patients with Buruli ulcer in Nigeria. *Transactions of the Royal Society of Tropical Medicine and Hygiene* 110(9):502-509. <https://doi.org/10.1093/trstmh/trw065>
- Mve-Obiang A, Lee RE, Portaels F, Small PLC (2003). Heterogeneity of mycolactones produced by clinical isolates of *Mycobacterium ulcerans*: implications for virulence. *Infections and Immunity* 71(2):774-783. <https://doi.org/10.1128/iai.71.2.774-783.2003>
- N'krumah RTAS, Koné B, Tiembre I, Cissé G, Pluschke G, Tanner M, Utzinger J (2016). Socio-Environmental Factors Associated with the Risk of Contracting Buruli Ulcer in Tiassalé, South Côte d'Ivoire: A Case-Control Study. *PLoS Neglected Tropical Diseases* 10(1):e0004327. <https://doi.org/10.1371/journal.pntd.0004327>
- PNLLUB (2019). Rapport statistique annuel de l'ulcère de Buruli. Ministère de la Santé, Cotonou, Bénin p.14
- PNLLUB (2018). Rapport annuel de l'ulcère de Buruli. Ministère de la Santé, Cotonou, Bénin P 12
- Portaels F, Chermial K, Elsen P, Johnson PD, Hayman JA, Hibble J, Kirkwood R, Meyers WM (2001). *Mycobacterium ulcerans* in wild animals. *Revue Scientifique et Technique (International Office of Epizootics)* 20(1):252-264. <https://doi.org/10.20506/rst.20.1.1270>
- Pouillot R, Matias G, Wondje CM, Portaels F, Valin N, Ngos F, Njikap A, Marsollier L, Fontanet A, Eyangoh S (2007). Risk Factors for Buruli Ulcer: A Case Control Study in Cameroon. *PLoS Neglected Tropical Diseases* 1(3):101. <https://doi.org/10.1371/journal.pntd.0000101>
- Quek TY, Athan E, Henry MJ, Pasco JA, Redden-Hoare J, Hughes A, Johnson PD (2007). Risk factors for *Mycobacterium ulcerans* infection, southeastern Australia. *Emerging Infectious Diseases* 13(11):1661
- Raghunathan PL, Whitney EAS, Asamoah K, Stienstra Y, Taylor TH, Amofah GK, Ofori-Adjei D, Dobos K, Guarner J, Martin S, Pathak S, Klutse E, Etuaful S, van der Graaf WTA, van der Werf TS, King CH, Tappero JW, Ashford DA (2005a). Risk factors for Buruli ulcer disease (*Mycobacterium ulcerans* Infection): results from a case-control study in Ghana. *Clinical Infectious Diseases: An Official Publication of the Infectious Diseases Society of America* 40(10):1445-1453. <https://doi.org/10.1086/429623>
- Raghunathan PL, Whitney EAS, Asamoah K, Stienstra Y, Taylor TH, Amofah GK, Ofori-Adjei D, Dobos K, Guarner J, Martin S, Pathak S, Klutse E, Etuaful S, van der Graaf WTA, van der Werf TS, King CH, Tappero JW, Ashford DA (2005b). Risk factors for Buruli ulcer disease (*Mycobacterium ulcerans* Infection): results from a case-control study in Ghana. *Clinical Infectious Diseases: An Official Publication of the Infectious Diseases Society of America* 40(10):1445-1453. <https://doi.org/10.1086/429623>
- Röltgen K, Pluschke G, Johnson PDR, Fyfe J (2017). *Mycobacterium ulcerans* DNA in Bandicoot Excreta in Buruli Ulcer-Endemic Area, Northern Queensland, Australia. *Emerging Infectious Diseases* 23(12):2042-2045. <https://doi.org/10.3201/eid2312.170780>
- Ross CE, Wu C (1995). The Links Between Education and Health. *American Sociological Review* 60(5):719-745. <https://doi.org/10.2307/2096319>
- Stoffel V, Barthelmé B, Chagué F (2005). Écopathologie tropicale : ulcère de Buruli par monts et par vaux, Summary. *Santé Publique* 17(2):191-197. <https://doi.org/10.3917/spub.052.0191>
- Tian RBD, Niamké S, Tissot-Dupont H, Drancourt M (2016a). Detection of *Mycobacterium ulcerans* DNA in the Environment, Ivory Coast. *PLoS One* 11(3):e0151567. <https://doi.org/10.1371/journal.pone.0151567>
- Tian RDB, Lepidi H, Nappéz C, Drancourt M (2016b). Experimental Survival of *Mycobacterium ulcerans* in Watery Soil, a Potential Source of Buruli Ulcer. *The American Journal of Tropical Medicine and Hygiene* 94(1):89-92. <https://doi.org/10.4269/ajtmh.15-0568>
- Wagner T, Benbow ME, Brenden TO, Qi J, Johnson RC (2008a). Buruli ulcer disease prevalence in Benin, West Africa: associations with land use/cover and the identification of disease clusters. *International Journal of Health Geographics* 7:25-. <https://doi.org/10.1186/1476-072x-7-25>
- Wagner T, Benbow ME, Burns M, Johnson RC, Merritt RW, Qi J, Small PLC (2008b). A Landscape-based model for predicting *Mycobacterium ulcerans* infection (Buruli Ulcer disease) presence in Benin, West Africa. *EcoHealth* 5(1):69-79. <https://doi.org/10.1007/s10393-007-0148-7>
- Walker G, Friedman DN, O'Brien MP, Cooper C, McDonald A, Callan P, O'Brien DP (2019). Paediatric Buruli ulcer in Australia. *Journal of Paediatrics and Child Health*. <https://doi.org/10.1111/jpc.14704>
- World Health Organization (WHO) (2017). Buruli ulcer. http://www.who.int/gho/neglected_diseases/buruli_ulcer/en/.
- World Health Organization (WHO) (2015). Buruli ulcer: Situation and trends. Global Health Observatory, Geneva, Switzerland. http://www.who.int/gho/neglected_diseases/buruli_ulcer/en/
- World Health Organization (WHO) (2012). Treatment of *Mycobacterium ulcerans* disease (Buruli ulcer): guidance for health workers. Geneva, Switzerland. <https://apps.who.int/iris/handle/10665/77771>
- Wu J, Tschakert P, Klutse E, Ferring D, Ricciardi V, Hausermann H, Oppong J, Smithwick EAH (2015). Buruli Ulcer Disease and Its Association with Land Cover in Southwestern Ghana. *PLoS Neglected Tropical Diseases* 9(6):e0003840. <https://doi.org/10.1371/journal.pntd.0003840>
- Yerramilli A, Tay EL, Stewardson AJ, Kelley PG, Bishop E, Jenkin GA, Starr M, Trevillyan J, Hughes A, Friedman ND, O'Brien DP, Johnson PDR (2017). The location of Australian Buruli ulcer lesions- Implications for unravelling disease transmission. *PLoS Neglected Tropical Diseases* 11(8):e0005800. <https://doi.org/10.1371/journal.pntd.0005800>
- Yotsu RR, Murase C, Sugawara M, Suzuki K, Nakanaga K, Ishii N, Asiedu K (2015). Revisiting Buruli ulcer. *The Journal of Dermatology* 42(11):1033-1041. <https://doi.org/10.1111/1346-8138.13049>