



Low Serum-Derived Syncytin-2 Levels in Exosome at Early Pregnancy is a Predictor of Preeclampsia: A Prospective Pilot Study in Benin, West Africa

Lokossou AG Gatien^{1,2*}, Davito Lucien¹, Badarou Amyrath¹, Accrombessi Manfred^{3,4}, Azonnakpo Julien², Kounoudji Giscarde², Lozes E Josette Marie², Dossou-Gbété Lucien⁶, Hounkpatin Benjamin¹, Perrin René-Xavier¹, and Barbeau Benoit^{5*}

¹Centre Hospitalier et Universitaire de la Mère et de l'Enfant de la Lagune (CHU-MEL), Cotonou, Bénin

²École Polytechnique d'Abomey Calavi (EPAC), Abomey-Calavi, Bénin

³Fondation pour la Recherche Scientifique (FORS), Cotonou, Bénin

⁴Faculty of Infectious and Tropical Diseases, Disease Control Department, London School of Hygiene and Tropical Medicine, WC1E 7HT London, United Kingdom

⁵Université du Québec à Montréal (UQAM), Département des sciences biologiques and Centre d'excellence en recherche sur les maladies orphelines-Fondation Courtois (CERMO-FC), Montréal, Canada

⁶Clinique Louis Pasteur, Porto-Novo, Bénin

Correspondence to: Lokossou AG Gatien, Centre Hospitalier et Universitaire de la Mère et de l'Enfant de la Lagune (CHU-MEL), Cotonou, Bénin; **E-mail:** gatien.lokossou@epac.uac.bj

Barbeau Benoit, Université du Québec à Montréal (UQAM), Département des sciences biologiques and Centre d'excellence en recherche sur les maladies orphelines-Fondation Courtois (CERMO-FC), Montréal, Canada; **E-mail:** barbeau.benoit@uqam.ca

Received date: October 17, 2020; **Accepted date:** October 28, 2020; **Published date:** November 4, 2020

Citation: Gatien LAG, Lucien D, Amyrat B, et al. (2020) Low Serum-Derived Syncytin-2 Levels in Exosome at Early Pregnancy is a Predictor of Preeclampsia: A Prospective Pilot Study in Benin, West Africa. J Obst Gynecol Surg 1(3): pp. 1-6.

Copyright: ©2020 Gatien LAG, et al. This is an open-access article distributed under the terms of the Creative Commons Attribution License, which permits unrestricted use, distribution and reproduction in any medium, provided the original author and source are credited.

ABSTRACT

Preeclampsia (PE) affects 2 to 8% of pregnant women and represents one of the major causes of maternal and perinatal morbidity and mortality, particularly in sub-Saharan Africa. A limited number of biomarkers have been proposed for the identification of pregnant women predisposed to preeclampsia. Syncytin-2 is an endogenous retrovirus envelope protein playing a key role in placental formation through the fusion of villous cytotrophoblasts, resulting in syncytiotrophoblast formation. The reduction of Syncytin-2 levels detected in placental tissue and on the surface of exosomes has been shown to strongly correlate with the severity of symptoms in preeclamptic patients. We were thus interested in conducting an analysis of a Benin cohort of pregnant women over the predictive value of this marker. From July 2015 to January 2017, 260 pregnant women were recruited in two health facilities. Blood samples were monthly collected from the beginning of pregnancy up to 20 weeks of gestation and exosomes were then isolated. We then compared Syncytin-2 levels in exosome preparations from women who presented PE to those with normal pregnancy. Our results showed that Syncytin-2 significantly decreased between 7 to 10 weeks of gestation in pregnant women with PE compared to normal pregnant women ($p=0.02$). Our study thereby suggests that Syncytin-2 could be a promising biomarker for early diagnosis of PE.

Keywords:

Pregnancy, Preeclampsia, Early diagnosis, Exosomes, Syncytin-2.

Introduction

Preeclampsia (PE) is the most common placental disorder occurring during pregnancy worldwide [1]. It is characterized by vascular dysfunction and exacerbated inflammation [2-6]. This disorder is often associated with changes in the levels of cytokines, chemokines, blood coagulation factors, and apoptotic markers [7]. In most cases, PE leads to multi-organ failure in the mother such as renal insufficiency, liver dysfunction, neurological or hematological complications, uteroplacental dysfunction and is responsible for significant maternal and perinatal morbidity and mortality. PE affects 2 to 8% of pregnancies representing a very high burden in low and middle-income countries (LMIC) [8-11]. In sub-Saharan Africa, severe PE and eclampsia are diagnosed in more than 15% of pregnancy [12]. Indeed, 99% of deaths related to PE occur in LMIC [12,13]. Symptoms related to PE result from systemic inflammation, oxidative stress, and endothelial dysfunctions [2]. Severe PE is normally associated

with the early appearance of symptoms, but can also occur at a later stage, i.e. 4-12 weeks postpartum [14]. However, suitable management of PE would require the early detection of predisposed pregnant women.

Important progress has been made in understanding the pathophysiology of PE. However, early diagnosis remains limited. Only two biomarkers are being used for the diagnosis of PE: low PIGF (Placental Growth Factor) and high sFlt-1 (Soluble Fms-Like Tyrosine Kinase 1). sFlt-1/PIGF ELISA ratio is used in Europe, US, and Canada for the identification of women at risk of developing PE in the second and third trimesters of pregnancy [15,16]. However, earlier diagnosis of PE is crucial in reducing maternal and fetal perinatal morbidity and mortality and preventing long-term postnatal maternal and newborn complications.

Syncytin-2 (S2) is a protein encoded by a human endogenous retrovirus (HERV) gene [17, 18] with fusogenic and immunosuppressive functions [19-22]. In addition to its key role in placental formation through the fusion of villous

cytotrophoblasts with the multinuclear syncytiotrophoblast, exosome-associated S2 has also been suggested to contribute to the immunomodulation prevailing in the placental environment [20,21,23-26]. Interestingly, it has been shown that serum-derived exosomes and placental tissues from PE patients showed lower abundance in S2 when compared to samples from women with normal pregnancy [25, 27]. We have therefore hypothesized that S2 embedded on the surface of exosomes could be used as an early biomarker of PE. The present study aimed to assess the beneficial predictive value of exosome-associated S2 in pregnant women predisposed to develop PE. Our results demonstrate a significant difference in S2 levels in PE patients vs. control at early time points and suggest that this protein should be further considered as an early marker for PE predisposition.

Methods

Study area and cohort

Pregnant women (n=533) were recruited in two health facilities in Southern Benin (the Centre Hospitalier Universitaire-Mère et Enfant de la Lagune and the Deo Gratias hospital). The study was conducted from July 2015 to January 2017. Following the exclusion of 273 women due to several reasons, 260 women were maintained in the study and were thus followed throughout their pregnancy with continuous monitoring for PE symptoms based on the recommendation from the International Society for the Study of Hypertension in Pregnancy, the Canadian Hypertension Society, and the Society of Obstetricians and Gynaecologists of Canada and Benin. PE was defined as *de novo* hypertension detected after 20 weeks of gestation (WG) combined with proteinuria (>300 mg/day) [28]. Only 23 (8.8%) samples were harvested before 7 WG. Among them, 2 (0.77%) had developed PE.

Isolation of exosomes from serum samples

Peripheral blood (7 ml) was monthly harvested from all participants from the beginning of pregnancy to 20 WG. Serum from blood samples was first stored at -20°C. Exosomes were then isolated, using the ExoQuick™ kit (EXOQ20A-1, System Bioscience, Mountain View, CA, USA), as previously described [25]. Briefly, sera were thawed on ice and centrifuged at 3000g for 15 minutes to remove cells and cellular debris. Serum-derived exosomes were isolated by adding exosome precipitation solution to 250 µl of serum. Tubes were inverted three times and the mixture was then incubated for 30 minutes at 4°C. After centrifugation at 1500 g for 30 minutes at 4°C, supernatant and excess of Exoquick solution were gently removed. After 2 consecutive washes in 0.1 M sodium phosphate, the pellet was resuspended in 100 µl binding buffer solution. Exosome

preparations were next incubated at 37°C for 20 minutes, and after centrifugation at 1500 g for 5 minutes, supernatants (containing exosomal proteins) were transferred to a new tube and quantified for protein concentration using the Pierce™ BCA Protein Assay Kit (2322; Waltham, Ma, USA). Samples were then stored at -20°C until use.

Quantification of S2 by ELISA

The CD63 ExoELISA kit (EXOEL-CD63A-1; System Biosciences) was used to normalize the amount of exosomes from sera, according to manufacturer's recommendations and further optimized for S2 quantification. Briefly, 96 well plates were incubated overnight at 37°C with 50 µg of exosomal proteins. Plates were washed three times with phosphate-buffered saline (PBS) and incubated with anti-CD63 (1:100; System Biosciences) or our purified anti-Syncytin-2 antibody (4 µg/ml in blocking solution [25]). Bound anti-CD63 or anti-Syncytin-2 antibodies were then detected with horseradish peroxidase (HRP)-conjugated anti-rabbit antibody (1:5000; System Biosciences) added for 1 h at room temperature. After three washes, HRP activity was assessed by the addition of the TMB (TetraMethylBenzidine) substrate. After the addition of the stopping solution (H₂SO₄ 1M), absorbance (450 nm) of each sample was measured on a microplate reader (F 200 pro Tecan). S2/CD63 ratios were finally determined from the measured absorbances.

Statistical analyses

Data were collected and analyzed using Microsoft Excel 2010 and Stata 15 (College Station, TX, USA), respectively. Mean and proportion was compared using paired Student t, Mann Whitney and Chi2 Pearson, or Fisher exact test depending on the distribution of variables. The threshold of significance was set to a p-value ≤ 0.05. The median of the ratios of S2/CD63 was outlined using quartile values.

Ethical statement

This study was approved by the Ethics Committee from the Institute of Applied Biomedical Science of Cotonou, Benin. All recruited pregnant women had signed an informed consent form to participate in the study.

Results

The mean age in our study group was 28.70 (SD ± 5.13, range 15-41) years (Table 1). The mean age in the PE group was 27.09 SD ± 6.24) years in comparison to 27,98 (SD ± 5,22) years in the normal pregnant women group. The mean gestational age at delivery was 38.70 WG (SD ± 1.52) in normal pregnant women and 37.76 WG (SD ± 2.07) in PE women. All PE patients (n=24, 8%) had diastolic blood pressure exceeding 90 mmHg and proteinuria ≥ 0.3 g/d (in 24-hour harvest) Thirty-one percent of the women were primiparous gravidity.

Table 1: Clinical characteristics of healthy pregnant women and patients with preeclampsia

Characteristics	Healthy pregnant women (n=236)	PE (n=24)	P-value
Age	27.98 ± 5.22	27,09 ± 6.24	0.435
Gestational ages at delivery	38.70 ± 1.52	37.76 ± 2.07	0.058

Age and gestational ages at delivery are expressed as means ± SD.

S2 and CD63 levels were quantified by ELISA in serum-derived exosomal samples and the logarithm values of S2/CD63 ratios were then calculated. In the overall study population, the incorporation of the S2/CD63 ratio was constant between 0 and

20 weeks of gestation (Figure 1A). Although S2/CD63 ratios in serum-derived exosomes of normal pregnant women showed the same trend (Figure 1B), in PE patients, ratios were more modest, especially at early time points (Figure 1C). The mean

of the S2/CD63 ratio in serum-derived exosomes harvested before 10 weeks of gestation, showed higher levels of S2 in samples from normal pregnant women compared to those with

PE (P=0,04)(Table 2). Women with a ratio of S2/CD63 \leq 17.5 before 10 weeks of gestation were 6 times more likely to suffer from preeclampsia (P=0,03)(Table 3).

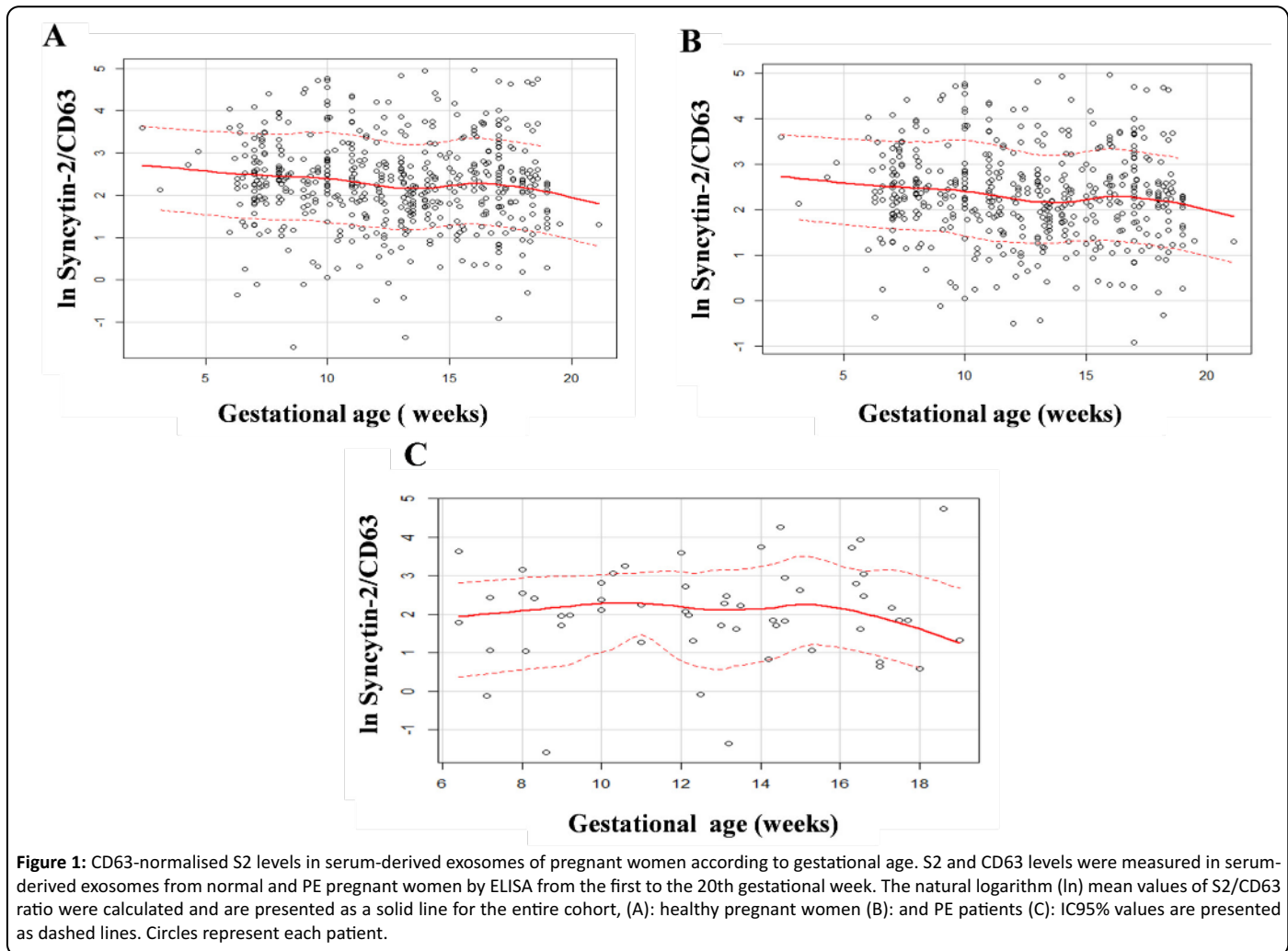


Table 2: Measurement of S2/CD63 ratios in normal pregnant women vs. PE patients at 10 weeks of gestation.

Status	Observed	Mean of	P-value
Control	74	30.63 \pm 27.80	0.04
Preeclampsia	10	12.55 \pm 11.68	
Total	84	28.47 \pm 27.00	

Table 3: Assessment of the risk of preeclampsia in women with a ratio of S2/CD63 \leq 17.5 before 10 weeks of gestation.

S2/CD63	Odd Ratio	95% Conf Interval	P-value
>17.5	1		
\leq 17.5	5.87	1.16-29.57	0.032

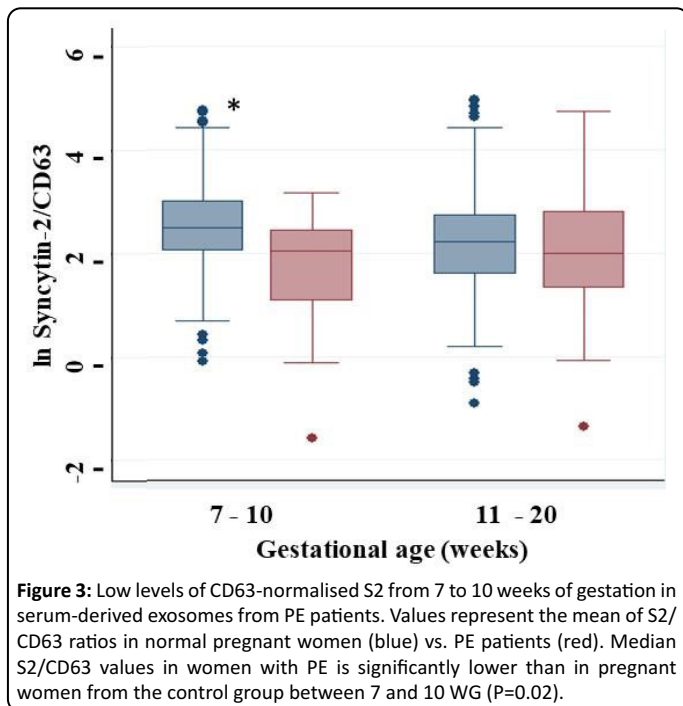
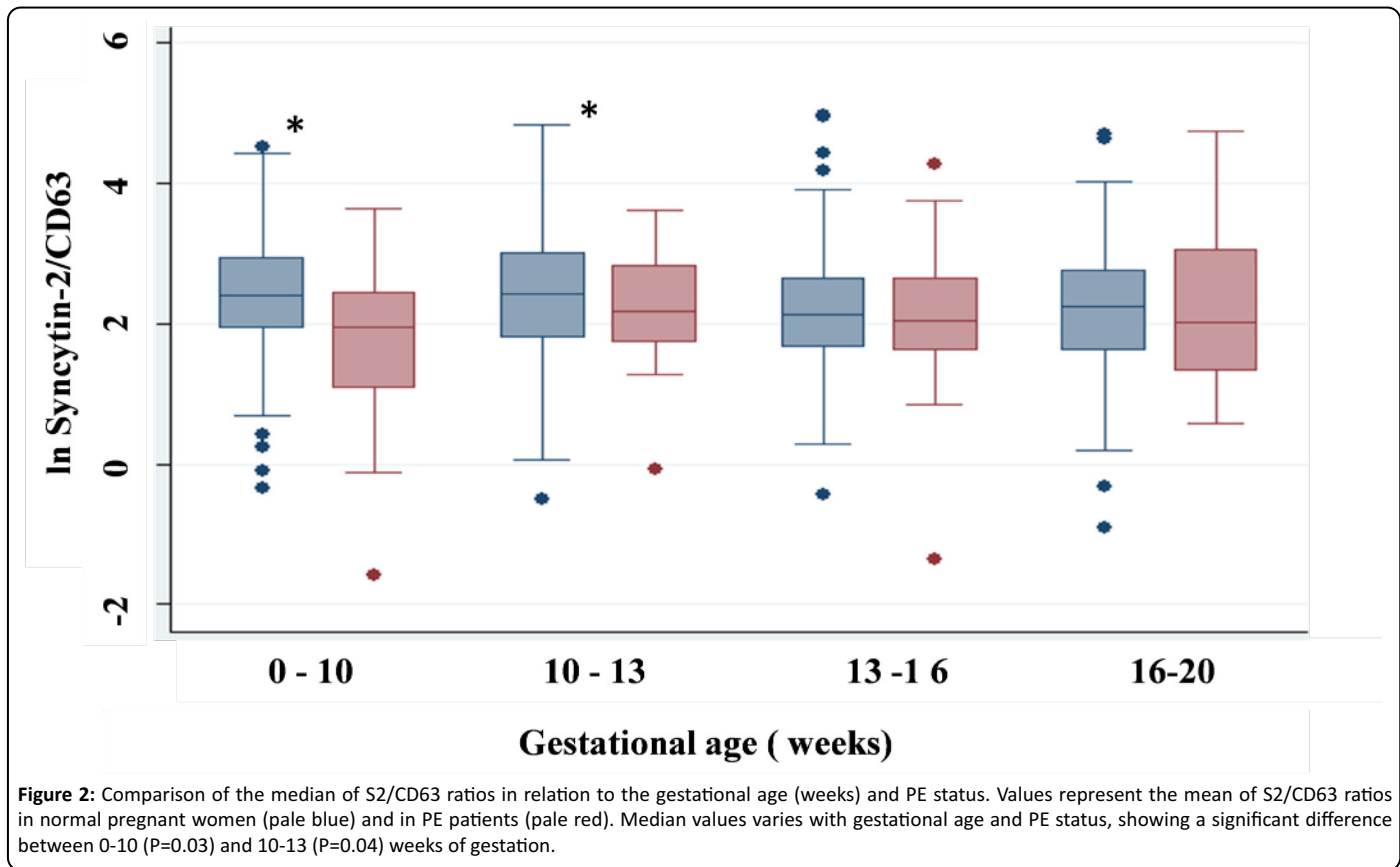
Pregnant women were further analyzed according to their gestational age. As depicted in Figure 2, an increased abundance of S2 was observed in serum-derived exosomes from normal pregnant women vs. PE women between 0 and 13 WG.

To determine the useful time for an early diagnosis of PE, we compared the median of the S2/CD63 ratio at different gestational ages. The median distribution of S2/CD63 ratios varied with gestational age and preeclampsia status with a significant difference displayed before 10 WG (P=0.03) and between 10 to 13 (P=0.04) weeks of gestation between normal

and PE-derived samples (Figure 2). Specifically, the median S2/CD63 ratio between 7 and 10 WG among women with PE was significantly lower than those with normal pregnancy (P=0.02) (Figure 3).

Discussion

We aimed to assess the potential relevance in using S2 as an early biomarker of PE. In this study, we showed that S2 levels significantly decreased from 7 to 10 weeks of gestation in serum-derived exosomes in pregnant women with PE compared



to normal pregnant women ($p=0.02$). Our data thus suggests that S2 could be a promising biomarker for early diagnosis of PE.

As clinical signs of PE only appear at 20 weeks of gestation, diagnosis of PE before this period of gestation should be beneficial for appropriate medical monitoring of suspected cases of PE. To determine the most adequate time point, we have compared the incorporation of in serum-derived exosomes of healthy pregnant women with those of PE patients before 10 weeks of gestation. Recruitment of pregnant

women during the first trimester of gestation especially before 10 WG was an important challenge, as most Beninese women come for their first antenatal consultation between 16 and 20 WG. Nonetheless, we were successful in recruiting several pregnant women before 10 weeks of gestation.

Several studies have shown that preeclampsia is associated with abnormal placentation [2]. This defect is followed by a systemic inflammatory response [2-5]. Also, as the placenta produces exosomes with immunosuppressive properties [21,23], potential defects in exosomes could also contribute to the severity of PE symptoms [21,25]. Further evidence from our group and others have argued that HERV-encoded S2, known to be implicated in the formation of the placenta and the maintenance of the immunosuppressive environment [20-22,29,30], shows a marked reduction in its levels in exosome and placental tissue of PE patients. These observations suggested that S2 could be used for PE diagnosis, especially knowing that serum-derived exosomes produced by the placenta should reflect the level of S2 expressed in the placenta.

Isolation of exosomes from blood represents a very useful choice for diagnostic purposes. However, many factors such as the type of anticoagulant, blood handling, time of sample collection, hemolysis, and others, may affect the composition and characteristics of exosomes in downstream analysis, leading to inaccurate results [31]. Thus, to ensure the quality of placenta-derived exosomes, the International Society for Extracellular Vesicles has recommended the use of tetraspanins (CD9, CD63, and CD81 and HSP70) to define exosomes [32]. In this study, we have used CD63 to normalize the number of exosomes, although we are aware that this marker is also present in other subpopulations of extracellular vesicles [33].

Our data show reduced S2/CD63 levels at early time points. This threshold is close to level 3, the natural logarithm value of the normal S2/CD63 ratio. When it is close to level 2, the risk of PE becomes high (Figure 1). Our data showed that S2/CD63 ratios during the time frame of 0-10 and 10-13 weeks of gestation was significantly lower in women who had developed PE during their pregnancy compared to women with normal pregnancy ($p=0.04$).

The S2/CD63 ratio in women with PE was still significantly lower than in the control group of pregnant women between 7 and 10 weeks of gestation. We had very few samples before 6 weeks of gestation ($n=6$) and no cases of PE during or after pregnancy, which did not allow us to address the reliability of our marker during this time frame. Noteworthy, our results further confirm our previous studies showing lower incorporation of S2 on the surface of serum-derived exosomes of women with PE [25]. As PE is a multifactorial pathology, a single marker is likely not sufficient in terms of diagnostic value [8]. Many other markers have been assessed, such as the anti-angiogenic factor sFlt-1 released by the placenta, which is involved in the endothelial dysfunction observed in PE. In women with PE, the levels of sFlt-1 rise 5 weeks before clinical detection and stay elevated until the onset of PE [34]. However, measurement of sFlt-1 between 11 and 13 weeks of gestation did not improve the prediction of PE [35]. sEndoglin has also been proposed as a suitable marker to assess the severity of PE and has been associated with an increased risk of adverse outcomes [36]. An established risk model based on VEGF, sEndoglin, PIGF, and sEGFR levels in serum has been tested and showed to predict PE at the late stage of pregnancy, but unfortunately not at early stages [37].

To improve early PE diagnosis, multiparametric models including biochemical, molecular, and genetic markers, are direly needed to provide the most reliable and accurate combination of markers for early diagnosis of PE [38-43]. Our data indicate that S2 remains a suitable marker for early diagnosis of PE and should be tested in combination with other current markers.

Conclusion

Significant progress has been made in the understanding of the pathophysiology of PE and suggests that the best predictive value for PE development during pregnancy should be offered by a combination of markers. In this study, we showed that exosome-associated S2 measured between 7 and 10 weeks of gestation. is reduced in PE patients when compared to normal pregnant women. Our data thereby suggest that S2 is a promising marker for early PE diagnosis. Further multicenter studies and multivariate analyses will be needed to validate its use

Acknowledgment

The authors thank all pregnant women and midwives, from CHU-MEL and Clinique Déo gratias, who participated in this study. This work was supported by the Canadian International Development Research Centre (BB) (grant no. 107718-00020699-027), Canadian Institutes of Health Research (BB) (grant no. MOP301784), March of Dimes Foundation (BB) (grant no. 6-FY13-155), and The World Academy of Science (AGGL) (grant no. 15-062 RG/BIO/AF/AC).

References

1. Roberts JM, Gammill HS (2005) Preeclampsia: Recent Insights. *Hypertension* 46(6): pp. 1243-1249.
2. Chaiworapongsa T, Chaemsaitong P, Yeo L, et al. (2014) Preeclampsia part 1: current understanding of its pathophysiology. *Nat Rev Nephrol* 10(8): pp. 466-480.
3. Hsu P, Nanan RKH (2014) Innate and Adaptive Immune Interactions at the Fetal and Maternal Interface in Healthy Human Pregnancy and Pre-Eclampsia. *Front Immunol* 5(3): pp. 1-12.
4. Luppi P, DeLoia JA (2006) Monocytes of preeclamptic women spontaneously synthesize pro-inflammatory cytokines. *Clin Immunol* 118(3): pp. 268-275.
5. Luppi P, Tse H, Lain KY, et al. (2006) Preeclampsia Activates Circulating Immune Cells with Engagement of the NF-kappaB Pathway. *Am J Reprod Immunol* 56(2): pp. 135-144.
6. Prins JR, Boelens HM, Heimweg J, et al. (2009) Preeclampsia is associated with lower percentages of regulatory T cells in maternal blood. *Hypertens Pregnancy* 28(3): pp. 300-311.
7. McKelvey KJ, Ariyakumar G, McCracken SA (2018) Inflammatory and Immune System Markers. In: Murthi P, Vaillancourt C (eds) *Preeclampsia*. Springer New York 1710: pp. 85-101.
8. Steegers EAP, von Dadelszen P, Duvekot JJ, et al. (2010) Preeclampsia. *Lancet Lond Engl* 376 (9741): pp. 631-644.
9. Mol BWJ, Roberts CT, Thangaratinam S, et al. (2016) Preeclampsia. *The Lancet* 387(10022): pp. 999-1011.
10. Maher GM, O'Keeffe GW, Kenny LC, et al. (2017) Hypertensive disorders of pregnancy and risk of neurodevelopmental disorders in the offspring: a systematic review and meta-analysis protocol. *BMJ Open* 7(10): pp. 1-5.
11. McLaren ZM, Sharp A, Hessburg JP, et al. (2017) Cost-effectiveness of medical devices to diagnose pre-eclampsia in low-resource settings. *Dev Eng* 2(1):99-106.
12. von Dadelszen P, Magee LA (2014) Pre-eclampsia: An Update. *Curr Hypertens Rep* 16(454): pp. 1-14.
13. Duley L (2009) The global impact of pre-eclampsia and eclampsia. *Semin Perinatol* 33(3): pp. 130-137.
14. Stone PJ, Franzblau C (1995) Increase in urinary desmosine and pyridinoline during postpartum involution of the uterus in humans. *Exp Biol Med* 201(1): pp. 1-415.
15. Schlembach D, Hund M, Schroer A, et al. (2018) Economic assessment of the use of the sFlt-1/PIGF ratio test to predict preeclampsia in Germany. *BMC Health Serv Res* 18(603): pp. 1-11.
16. Hodel M, Blank PR, Marty P, et al. (2019) sFlt-1/PIGF Ratio as a Predictive Marker in Women with Suspected Preeclampsia: An Economic Evaluation from a Swiss Perspective. *Dis Markers* 2019(8): pp. 1-11.
17. Chen CP, Chen LF, Yang SR, et al. (2008) Functional Characterization of the Human Placental Fusogenic Membrane Protein Syncytin 21. *Biol Reprod* 79(5): pp. 815-823.
18. Dupressoir A, Heidmann T (2011) Les syncytines: Des protéines d'enveloppe rétrovirales capturées au profit du

développement placentaire. *Médecine/sciences* 27(2): pp. 163-169.

19. Vargas A, Moreau J, Landry S, et al (2009) Syncytin-2 plays an important role in the fusion of human trophoblast cells. *J Mol Biol* 392(2): pp. 301-318.

20. Lokossou A, Toudic C, Barbeau B (2014) Implication of Human Endogenous Retrovirus Envelope Proteins in Placental Functions. *Viruses* 6(11): pp. 4609-4627.

21. Lokossou AG, Toudic C, Nguyen PT, et al. (2020) Endogenous retrovirus-encoded Syncytin-2 contributes to exosome-mediated immunosuppression of T cells†. *Biol Reprod* 102(1): pp. 185–198

22. Toufaily C, Lokossou AG, Vargas A, et al. (2015) A CRE/AP-1-like motif is essential for induced syncytin-2 expression and fusion in human trophoblast-like model. *PLoS One* 10(3): pp. 1-23.

23. Kshirsagar SK, Alam SM, Jasti S, et al. (2012) Immunomodulatory molecules are released from the first trimester and term placenta via exosomes. *Placenta* 33(12):982-990.

24. Redman CWG, Tannetta DS, Dragovic RA, et al. (2012) Review: Does size matter? Placental debris and the pathophysiology of pre-eclampsia. *Placenta* 33:548-554.

25. Vargas A, Zhou S, Éthier-Chiasson M, et al. (2014) Syncytin proteins incorporated in placenta exosomes are important for cell uptake and show variation in abundance in serum exosomes from patients with preeclampsia. *FASEB J Off Publ Fed Am Soc Exp Biol* 28(8): pp. 3703-3719.

26. Mitchell MD, Peiris HN, Kobayashi M, et al. (2015) Placental exosomes in normal and complicated pregnancy. *Am J Obstet Gynecol* 213(4): pp. S173-S181.

27. Vargas A, Toufaily C, LeBellego F, et al. (2011) Reduced Expression of Both Syncytin 1 and Syncytin 2 Correlates With Severity of Preeclampsia. *Reprod Sci* 18(11): pp. 1085-1091.

28. Tranquilli AL, Dekker G, Magee L, et al. (2014) The classification, diagnosis and management of the hypertensive disorders of pregnancy: A revised statement from the ISSHP. *Pregnancy Hypertens Int J Womens Cardiovasc Health* 4(2): pp. 97-104.

29. Schlecht-Louf G, Renard M, Mangeney M, et al. (2010) Retroviral infection in vivo requires an immune escape virulence factor encrypted in the envelope protein of oncoretroviruses. *Proc Natl Acad Sci* 107(8): pp. 3782-3787.

30. Lokossou AG, Toufaily C, Vargas A, et al. (2016) siRNA Transfection and EMSA Analyses on Freshly Isolated Human

Villous Cytotrophoblasts. *J Vis Exp JoVE* 115(8): pp. 53995.

31. Witwer KW, Buzás EI, Bemis LT, et al. (2013) Standardization of sample collection, isolation and analysis methods in extracellular vesicle research. *J Extracell Vesicles* 2(1): pp. 20360.

32. Théry C, Amigorena S, Raposo G, et al. (2006) Isolation and Characterization of Exosomes from Cell Culture Supernatants and Biological Fluids. *Curr Protoc Cell Biol* 30(1): pp. 1-29.

33. Andreu Z, Yáñez-Mó M (2014) Tetraspanins in Extracellular Vesicle Formation and Function. *Front Immunol* 5(442): pp. 1-12.

34. Levine RJ, Maynard SE, Qian C, et al. (2004) Circulating Angiogenic Factors and the Risk of Preeclampsia. *N Engl J Med* 350 (7): pp. 672-683.

35. Tsiakkas A, Mendez O, Wright A, et al. (2016) Maternal serum soluble fms-like tyrosine kinase-1 at 12, 22, 32 and 36 weeks' gestation in screening for pre-eclampsia: sFlt-1 at 12, 22, 32 and 36 weeks in screening for PE. *Ultrasound Obstet Gynecol* 47(4): pp. 478-483.

36. Leaños-Miranda A, Navarro-Romero CS, Sillas-Pardo LJ, et al. (2019) Soluble Endoglin As a Marker for Preeclampsia, Its Severity, and the Occurrence of Adverse Outcomes. *Hypertension* 74(4): pp. 991-997.

37. Cui L, Shu C, Liu Z, et al. (2018) Serum protein marker panel for predicting preeclampsia. *Pregnancy Hypertens* 14(2): pp. 279-285.

38. Spencer K, Cowans NJ, Chefetz I, et al. (2007) First-trimester maternal serum PP-13, PAPP-A and second-trimester uterine artery Doppler pulsatility index as markers of pre-eclampsia. *Ultrasound Obstet Gynecol* 29(2): pp. 128-134.

39. Poon LCY, Karagiannis G, Leal A, et al. (2009) Hypertensive disorders in pregnancy: screening by uterine artery Doppler imaging and blood pressure at 11-13 weeks. *Ultrasound Obstet Gynecol* 34(5): pp. 497-502.

40. Poon LCY, Kametas NA, Chelemen T, et al. (2010) Maternal risk factors for hypertensive disorders in pregnancy: a multivariate approach. *J Hum Hypertens* 24(2): pp. 104-110.

41. Martin A, Krishna I, Martina B, et al. (2014) Can the quantity of cell-free fetal DNA predict preeclampsia: a systematic review: Cell-free fetal DNA and preeclampsia prediction. *Prenat Diagn* 34(7): pp. 685-691.

42. Anderson UD, Gram M, Åkerström B, et al. (2015) First Trimester Prediction of Preeclampsia. *Curr Hypertens Rep* 17(74): pp. 1-8.

43. Park H, Shim S, Cha D (2015) Combined Screening for Early Detection of Pre-Eclampsia. *Int J Mol Sci* 16(8): pp. 17952-17974.